

TPMS Tools & Sensors

TPMS Accessories & Kits

TPMS Tools

TPMS Transmitters

Aftermarket Accessory Kits

Tire Valves

Truck & Specialty Valves

Valve Caps, Cores & Extensions

Special Application Products

Large Bore Extensions

Valve Hardware Tools

Tire Gauges

Inflator Gauges

# VALVE HARDWARE

### AUTEL MAXITPMS ITS600 SERVICE TOOL

- New tablet style TPMS tool
- Optical scanner identifies VIN/MMY
- Exclusive TPMS status screen
- Fast OBD II relearn for most US domestic vehicles
- Copy by OBD sensor programming for faster service
- Batch program up to 20 Autel 1-Sensors
- Activate, read, relearn all known TPMS sensors
- Wireless OBDII connection via Bluetooth VCI
- Tire pressure placard value reset
- Read/clear codes & view all system live data (with Pro Upgrade)
- Includes 4 commonly used maintenance service
- FREE Wi-Fi software updates for the life of the tool
- 5.5" Touchscreen (1280 x 720) / Android 9.0 / 8MP camera
- On-Tool Tire Expiration Notice / Tire Recall Lookup / Scan DOT



469-60012



12  
MX-SENSORS



469-60024



24  
MX-SENSORS



Tool Only

469-60000

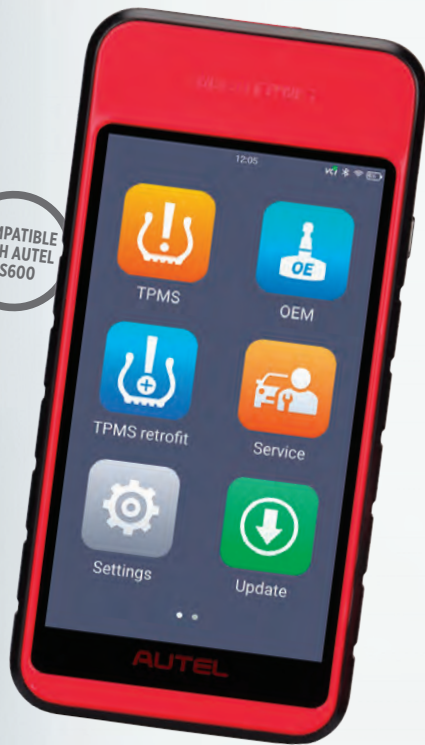
ASCOT NO.	MFG. NO.	DESCRIPTION
469-60000	ITS600	Autel ITS600 MaxiTPMS Diagnostic Tool
469-60012	ITS600K12	Autel ITS600K12 MaxiTPMS Tool & (12) 1-Sensors
469-60024	ITS600K24	Autel ITS600K24 MaxiTPMS Tool & (24) 1-Sensors



### AUTEL TBE200 TREAD DEPTH MEASUREMENT TOOL

- 1.65" AMOLED super retina touchscreen
- 1 Megapixel Macro Camera, 8 Megapixel Zoom Camera
- Tire Tread Depth/ Brake Disc Wear Measurement
- No Need To Remove The Wheel During Measurement
- Laser Measurement with 0.1mm Accuracy
- Real-Time Measurement Data on Touchscreen
- Full Tread Measurement / Quick Check
- Measurement Data Curve Display/ Uneven Wear Analysis
- Detailed Replacement & Maintenance Suggestions
- Test Detail For Single Tire Tread / Brake Disc
- Tire Expiration Notice / Tire Recall Lookup / Scan DOT (COMING SOON)
- Take Photos of Tire Wear & Damage
- Calibration Plate Included
- Compatible with Autel ITS600
- Tire Health Report QR Code for easy sharing

COMPATIBLE WITH AUTEL ITS600



## TBE200 INTELLIGENT LASER MEASUREMENTS

- TIRE TREAD DEPTH MEASUREMENT
- BRAKE DISC WEAR MEASUREMENT
- 0.1MM LASER ACCURACY
- TOUCHSCREEN DISPLAY >

VALVE HARDWARE

ASCOT NO.	MFG. NO.	DESCRIPTION
454-00200	TBE200	Autel TBE200 MaxiTPMS Tread Depth Measurement Tool



**WARNING:** For more information go to [www.P65Warnings.ca.gov](http://www.P65Warnings.ca.gov).



**AUTEL ADVANCED TPMS SERVICE TOOL + (12) 1-SENSORS**

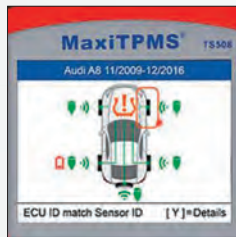
- The MaxiTPMS® TS508 is a new generation TPMS diagnostic & service tool specially designed to activate all known TPMS sensors, read TPMS sensor status, check TPMS system health condition, program MX-sensors and conduct TPMS relearn
- With Quick Mode and Advanced Mode options, you can save time and energy by choosing the most suitable way to complete TPMS work

**AUTEL TPMS TOOL/SENSOR KIT CONTAINS:**

- TS508 TPMS Tool
- 12 MX-Sensors w/ Rubber Stems
- 4 Metal Valve Stems
- OBDII Cord
- Charging Cord
- Magnet
- User Manual
- Blow Molded Case



Simplified interface.



At-a-Glance TPMS Status Screen.

ASCOT NO.	MFG. NO.	DESCRIPTION
469-50812	TS508K-12	Autel TPMS Tool/Sensor Kit



469-50812

12  
MX-SENSORS



**AUTEL MAXI TPMS WIFI TOOL & (16) 1-SENSORS**

- 4 programming methods
- Free updates for the life of the tool
- Exclusive TPMS status screen
- Change placard value (domestics)
- OBD relearn on domestics
- Exclusive copy by OBD
- Update via WI-FI

**AUTEL TPMS TOOL/SENSOR KIT CONTAINS:**

- TS508 TPMS Tool
- 16 MX-Sensors w/ Rubber Stems
- 4 Metal Valve Stems
- OBDII Cord
- Charging Cord
- Magnet
- User Manual
- Blow Molded Case

ASCOT NO.	MFG. NO.	DESCRIPTION
469-50816	TS508WFK-16	Maxi TPMS WIFI Tool & 16 MX-Sensor Kit



469-50816

WIFI  
CAPABILITIES

16  
MX-SENSORS





469-60812

### MAXI TS608 TPMS/DIAGNOSTIC TOOL & (12) 1-SENSORS

- Activate all known TPMS sensors and read sensor status
- Diagnose ECU for complete TPMS health check with DTC description
- Read DTCs from ECU and erase DTCs
- Program MX-Sensors by copying original sensor IDs or creating new IDs randomly
- On-tool relearn procedure and wide OBD relearn coverage
- Equipped with a 7-inch touch screen with 1024 \* 600P resolution and a VCI mini for wireless communication with the test vehicle

#### AUTEL TPMS TOOL/SENSOR KIT CONTAINS:

- TS608 TPMS Tool
- 12 MX-Sensors w/ Rubber Stems
- Charging Cord
- User Manual
- Blow Molded Case

ASCOT NO.	MFG. NO.	DESCRIPTION
469-60812	TS608K-12	Autel Maxi TPMS Diagnostic Tool

12  
MX-SENSORS



### AUTEL MAXI TPMS DIAGNOSTIC TOOL

- Activate all known TPMS sensors and read sensor status
- Diagnose ECU for complete TPMS health check with DTC description
- Read DTCs from ECU and erase DTCs
- On-tool relearn procedure and wide OBD relearn coverage
- Program MX-Sensors by copying original sensor IDs or creating new IDs randomly
- Equipped with a 7-inch touch screen with 1024\*600P resolution and a VCI mini for wireless communication with the test vehicle



469-00608

ASCOT NO.	MFG. NO.	DESCRIPTION
469-00608	TS608	Autel Maxi TPMS Diagnostic Tool



Advanced Service Features.

469-06464



### AUTEL WIRELESS OBDII CONNECTOR

ASCOT NO.	MFG. NO.	DESCRIPTION
469-06464	VCI Mini	Autel Wireless OBDII Connector

VALVE HARDWARE

# AUTEL®

## AUTEL MX-SENSOR PROGRAMMABLE UNIVERSAL TPMS SINGLE SENSORS

- Combines 315MHz & 433MHz frequencies into a single sensor
- 99% vehicle coverage
- The exclusive MX-Sensor patented PRESS release valve allows rubber and metal valve stems to freely interchange by hand without requiring a tool
- Built to match or exceed OEM sensors in frequency strength and durability
- 100% ID clone-able with no relearn required
- Quickly update during installation with an Autel wireless programming tool



461-20326



461-20327



Autel MX-Sensor 240 Bulk Pk.

ASCOT NO.	MFG. NO.	DESCRIPTION
461-20326	1-Sensor	Autel MX-Sensor Programmable Universal TPMS Single Sensor - Rubber
461-20327	1-Sensor-M	Autel MX-Sensor Programmable Universal TPMS Sensor - Metal
461-20328	1-Sensor-240	Autel MX-Sensor w/ Rubber Valve - 240 Bulk Pk.
461-20329	1-Sensor-24	Autel MX-Sensor w/ Rubber Valve - 24 Bulk Pk.
461-20330	1-Sensor-M-240	Autel MX-Sensor w/ Metal Valve - 240 Bulk Pk.
461-20331	1-Sensor-M-480	Autel MX-Sensor w/ Rubber Valve - 480 Bulk Pk.

## AUTEL MX-SENSOR REPLACEMENT VALVES

- Patented PRESS release valve design • No valve tools required
- Simply click in and press out • Cap and core included • Available in rubber or metal stems

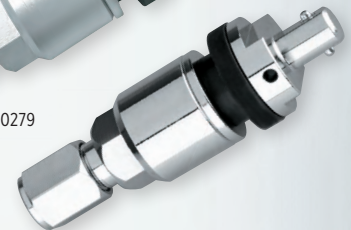
ASCOT NO.	MFG. NO.	DESCRIPTION
RUBBER		
469-20280	RV1000	Autel MX-Sensor Replacement Rubber Valve
METAL		
469-20279	MV1000	Autel MX-Sensor Replacement Metal Valve
469-20281	CV-001	Autel Black MX-Sensor Replacement Metal Valve
469-20282	CV-002	Autel Titanium Grey MX-Sensor Replacement Metal Valve
469-20283	CV-003	MX-Sensor Chrome Replacement TPMS Valve



469-20280



469-20279



469-20283

## AUTEL TIRE PRESSURE PLACARD VALUE STICKER

- Never set tire pressure below OE Specs
- Always use equal to or greater than load rating on replacement tire to determine proper air pressure for placard
- Always complete and install a new tire placard properly marked
- Place new tire placard next to OE tire placard
- Quantity: 100 per roll

ASCOT NO.	MFG. NO.	DESCRIPTION
469-20284	PVS01	Autel Tire Pressure Placard Value Sticker (100 per Roll)



469-20284

**WARNING:** For more information go to [www.P65Warnings.ca.gov](http://www.P65Warnings.ca.gov).



SCHRADER EZ-SENSOR®/TOOL BUNDLE

- Programs EZ-sensor® and other programmable TPMS sensors
- Reads, activates & relearns all known TPMS sensors in the market
- Clears, retrieves and decodes TPMS Diagnostic Trouble Code (DTC) information
- Offers quick & convenient software updates through WIFI
- Comes with 5 years of software updates



Schrader S57 Tool



SCHRADER EZ-SENSOR® GO

**THE MARKET'S FASTEST PROGRAMMABLE TPMS SENSOR!**

1-3 SECOND SENSOR PROGRAMMING FOR A MAJORITY OF DOMESTIC VEHICLES. INCLUDES THE SAME GREAT BENEFITS AND FUNCTIONALITY OF THE EZ-SENSOR®

- 1 SKU
- Combines 314.9, 315 & 433 MHZ
- PROGRAMMABLE: Compatible with most tools on the market you may already own
- Rubber Snap-In Stem
- OE QUALITY: From the OE Supplier



461-33560



Includes  
**100**  
EZ-sensors®

ASCOT NO.	MFG. NO.	DESCRIPTION
469-21057	21057-S57EZG0100	Schrader EZ-sensor®/Tool Bundle

ASCOT NO.	MFG. NO.	DESCRIPTION
461-33560	33560	Schrader EZ-sensor® GO TPMS Sensor
461-33561	33560M	Schrader EZ-sensor® GO - 220 Bulk Pk.
461-33562	33560-24	Schrader EZ-sensor® GO - 24 Bulk Pk.

VALVE HARDWARE



TECH600PRO

- High Resolution Color Display
- Graphical User Interface
- Wireless Vehicle Connection Interface
- Long Lasting, Rechargeable Battery
- Improved LF Signal and UHF Detection
- Faster Tool Response and Operation
- 2 Year Warranty / 2 Year's Software



469-40600

TECH450PRO

- High Resolution Color Display
- Advanced TPMS Technology for faster programming
- Comprehensive OBD Relearn Coverage for Import & Domestic Vehicles
- Long Lasting, Rechargeable Battery
- Improved LF Signal and UHF Detection
- Faster Tool Response and Operation
- TPMS Placard Adjusting
- Programs Many Aftermarket Sensors
- Direct Wi-Fi Updating
- Bluetooth Capable
- 2 Year Warranty / 2 Year's Software



469-40450

ASCOT NO.	MFG. NO.	DESCRIPTION
469-40600	WRT600PRO	Tech600PRO TPMS Tool Kit - INCLUDES Tech600Pro, Wireless VCI, Power Supply, USB Cable, Quick Start Guide, Black Soft Case, 2 Year Tool Warranty, 2 Year Tool Software
469-40630	WRT600PRO-RS30P	Tech600PRO RITE-SENSOR Bundle Kit - INCLUDES Tech600Pro, Wireless VCI, Power Supply, USB Cable, Quick Start Guide, 30 Rubber Stem Rite-Sensors, 2 Year Tool Warranty, 5 Year Tool Software

ASCOT NO.	MFG. NO.	DESCRIPTION
469-40450	WRT450PRO	Tech450PRO TPMS Tool

NEWEST TPMS INNOVATION!

TECH RITE PRO

- The TechRITEPro combines high powered functionality with incredible affordability
- The "TRP" is an easy-to-use TPMS Diagnostic Tool, TPMS Relearn Tool, and Rite-Sensor® programming Tool
- High Resolution Color Display
- Long Lasting, Rechargeable Battery
- Removable/Replaceable Battery
- Improved LF Signal and UHF Detection
- Faster Tool Response and Operation
- Heavy Duty OBDII Cable/Connector
- 2 Year Warranty / 2 Year's Software



469-40100

ASCOT NO.	MFG. NO.	DESCRIPTION
469-40100	WRTRP100	TechRite PRO
469-40110	WRTRP100-RS10P	TechRite PRO with 10 RITE-SENSORS
469-40130	WRTRP100-RS30P	TechRite PRO with 30 RITE-SENSORS



VALVE HARDWARE





- Configures in less than 3 seconds
- Programs & Updates in less than 10 seconds
- Dual Frequency [315 MHz and 433 MHz]
- 99%, Single SKU Application Coverage
- Comes with Rubber Valve Stem
- Programs with Bartec TPMS Tools
- Programs in free space or assembled in the wheel
- Programming process is directed by the tool
- Complete offering including replacement valves and service kits



Rubber & Aluminum Replacement Valves Available



SERVICE KITS AVAILABLE!

ASCOT NO.	MFG. NO.	DESCRIPTION
461-10010	RS-1000-10	Rite-Sensor® Sleeve of 10 Boxed Sensors, Rubber & Aluminum Stem (Red Box)
461-10120	RS-1000-120	Rite-Sensor® Case Pack of 120, Rubber & Aluminum Stem
461-10020	RS-1000-20B	Rite-Sensor® Bulk Pack of 20 Rubber Stem
461-10121	RS-1000-120B	Rite-Sensor® Bulk Pack of 120, Rubber Stem
461-10011	RS-1000-10R	Rite-Sensor® Sleeve of 10 Sensors, Rubber Stem (Grey Box)
461-10122	RS-1000-120R	Rite-Sensor® Master Pack, 12 Sleeves of 10 Boxed Sensors (120 total), Rubber Stem (Grey Box)

BARTEC SOFTWARE BUNDLES

- 1, 2 or 3-year electronic TPMS tool software updates
- Tool updates annually adding features, functions & coverages



ASCOT NO.	MFG. NO.	DESCRIPTION
469-46001	WRT600PROSULRS1E	Electronic Tech600PRO one year software update license w/ 10 RITE-SENSORS
469-46002	WRT600PROSULRS2E	Electronic Tech600PRO two-year software update license w/ 16 RITE-SENSORS
469-46003	WRT600PROSULRS3E	Electronic Tech600PRO three-year software update license w/ 24 RITE-SENSORS
469-45001	WRT500SULRS1E	Electronic Tech500 one year software update license w/ 10 RITE-SENSORS
469-45002	WRT500SULRS2E	Electronic Tech500 two-year software update license w/ 16 RITE-SENSORS
469-45003	WRT500SULRS3E	Electronic Tech500 three-year software update license w/ 24 RITE-SENSORS
469-45010	WRT450PROSULRS1E	Electronic Tech450PRO one year software update license w/ 10 RITE-SENSORS
469-45020	WRT450PROSULRS2E	Electronic Tech450PRO two-year software update license w/ 16 RITE-SENSORS
469-45030	WRT450PROSULRS3E	Electronic Tech450PRO three-year software update license w/ 24 RITE-SENSORS
469-44001	WRT400PROSULRS1E	Electronic Tech400PRO one year software update license w/ 10 RITE-SENSORS
469-44002	WRT400PROSULRS2E	Electronic Tech400PRO two-year software update license w/ 16 RITE-SENSORS
469-44003	WRT400PROSULRS3E	Electronic Tech400PRO three-year software update license w/ 24 RITE-SENSORS
469-43001	WRT300PROSULRS1E	Electronic Tech300PROC one year software update license w/ 8 RITE-SENSORS
469-43002	WRT300PROSULRS2E	Electronic Tech300PROC two-year software update license w/ 14 RITE-SENSORS
469-43003	WRT300PROSULRS3E	Electronic Tech300PROC three-year software update license w/ 20 RITE-SENSORS
469-44101	WRTRPSULRS1E	Electronic TechRITEPRO one year software update license w/4 RITE-SENSORS
469-44102	WRTRPSULRS2E	Electronic TechRITEPRO two-year software update license w/8 RITE-SENSORS
469-44103	WRTRPSULRS3E	Electronic TechRITEPRO three-year software update license w/12 RITE-SENSORS

VALVE HARDWARE



### TPMS CHECK BOX

• Identify differences between the tire filing gauge and the TPMS sensor readings • Designed for use with all styles of TPMS sensors • Test TPMS sensors for defects before mounting to the wheel



469-03200

ASCOT NO.	MFG. NO.	DESCRIPTION
469-03200	OCB	TPMS Check Box

### VT TRUCK

• Ideal for fleet management and heavy vehicle maintenance • Manages and stores up to 22 wheels • Checks tire pressure to prevent under-inflation and reduce vehicle down time • Activates TPMS sensors of major truck and bus brands • Displays all sensor data: ID, tire pressure, tire temperature, battery status, etc. • Identifies the sensor by vehicle, by sensor reference or simply scan all protocols to activate • Provides easy access into the wheel arch and twin wheel configurations



469-05001

ASCOT NO.	MFG. NO.	DESCRIPTION
469-05001	VTTRUCK	VT Truck Activation Tool for Trucks and Buses

### VT37 TPMS RESET, TRIGGER & PROGRAMMING TOOL

As the successor to the VT36, the brand new VT37 is the ideal tool for DIYers, technicians and front counter workers. The tool is designed to activate, read and service all major OEM & aftermarket sensor brands, as well as perform vehicle specific TPMS relearn procedures. Constant Live Sensor and quarterly updates allow for the newest TPMS sensors to be added to the tool effortlessly. Whether it's stored in a glove compartment or toolbox, the VT37 is the perfect partner for servicing TPMS.



469-37100

ASCOT NO.	MFG. NO.	DESCRIPTION
469-37100	VT37	VT37 TPMS Reset, Trigger & Programming Tool

### VT56 DIAGNOSTIC TPMS TOOL KIT



469-56100

ASCOT NO.	MFG. NO.	DESCRIPTION
469-56100	TS56-1000	VT56 TPMS Diagnostic & Reset Master Kit. <b>INCLUDES:</b> VT56 TPMS Tool, OBDII module, docking station, printer, CD with manual and software, magnet, reference guide, USB cable and power supply
469-56102	TS56-1002	VT56 TPMS Tool OBDII Kit. <b>INCLUDES:</b> VT56 TPMS Tool, OBDII module, printer, CD with manual and software, magnet, reference guide, USB cable and power supply

### VT57 ALL-IN-ONE TPMS & TIRE MANAGEMENT TOOL

Introducing the all-new VT57 with a brand-new touchscreen interface, 100% OEM sensor diagnostic coverage, 90% OBD coverage, tire tread depth capturing, "Sync-ID" OBD technology and much more. Constant Live Sensor updates and the ability to connect Wi-Fi to ensure that the VT57 has the latest coverage available.



469-57100

ASCOT NO.	MFG. NO.	DESCRIPTION
469-57100	VT57	VT57 All-In-One TPMS & Tire Management Tool

# TPMS Accessories & Kits



## SCHRADER TPMS VALVE CAPS



468-20595 468-00050



468-20495 468-20795 468-20995



468-59019

ASCOT NO.	MFG. NO.	DESCRIPTION	QTY./BOX
468-00050	20395	Plastic Valve Caps	100
468-20495	20495	Aluminum Valve Caps	100
468-20595	20595	Black TPMS Plastic Sealing Valve Caps for Snap-In Transmitters	100
468-20695	20695	Green TPMS Plastic Sealing Valve Caps for Snap-In Transmitters	100
468-20795	20795	Green TPMS Plastic Sealing Valve Caps	100
468-20995	20995	Black TPMS Plastic Sealing Valve Caps	100
468-59019	59-0019	Green Nitrogen Indicating Aluminum Valve Cap	100
468-59021	59-0021	Chrome-Plated Brass Valve Caps	100
468-59023	59-0023	Universal Nitrogen Caps	100

## SCHRADER REPLACEMENT ALUMINUM VALVE STEMS

ASCOT NO.	MFG. NO.	DESCRIPTION
469-34000	34000	Replacement Aluminum Valve Stem
469-25080	25080	Aluminum Straight Stem for 90 Degree EZ-Sensor
469-25078	25078	Aluminum Angled Stem for 90 Degree EZ-Sensor
469-25082	25082	Black Straight Stem for 90 Degree EZ-Sensor
469-25083	25083	Black Angled Stem for 90 Degree EZ-Sensor



469-34000

## SCHRADER TPMS VALVE CORE

- **Electroless Nickel-Plated valve core**
- **QUANTITY:** Packaged 100 per box

ASCOT NO.	MFG. NO.	DESCRIPTION
468-20055	20055	Schrader TPMS Valve Core



468-20055

## BERU TPMS VALVE INSERTS

- **Original equipment valve insert for the HUF Tire Safety System**
- Each Insert comes complete with cap, core, grommet & grommet nut
- Colored bottom to differentiate inserts • **APPLICATIONS:** Audi, Bentley, BMW, Ferrari, Land Rover, Maserati, Maybach, Mercedes-Benz, Porsche, Volkswagen • Requires TX-20EZ torx tool for assembly/disassembly



ORIGINAL EQUIPMENT VALVE INSERT



COLORED BOTTOMS



461-59307



461-59337



461-59357



461-59387

ASCOT NO.	MFG. NO.	DESCRIPTION
461-59307	59.0342	Green Insert
461-59337	59.0340	Silver Insert
461-59357	59.0346	Orange Insert
461-59387	59.0344	Black Insert
469-02020	TX-20EZ	Torx Screwdriver

## TPMS Accessories & Kits (cont.)



### DILL TPMS VALVE CAPS & CORES

• **QUANTITY:**  
Packaged  
100 per box



### TPMS REPLACEMENT VALVES

ASCOT NO.	MFG. NO.	DESCRIPTION
468-00635	635	Plastic Cap for VS-950 TPMS Snap-In Valve
468-00650	650	Small Plastic TPMS Valve Cap - Gray
468-00680	680	N2 Aluminum Cap for TPMS
468-00690	690	N2 Plastic Cap for TPMS
468-01001	100-TP	Electroless Nickel Plated Valve Core
468-06300	630N	Plastic TPMS Valve Cap - Gray
469-00650	650B	Short Black Plastic TPMS Valve Cap



### ALLIGATOR TPMS SNAP-IN REPLACEMENT VALVE

- Alligator's innovative anti-rotation feature with a rubber lip at the base to prevent the sensor and valve from spinning in the wheel
- Maximum published speed rating of 130 MPH - Industry highest
- Self-tapping T10 screw provides better torque and locks the valve to the sensor for a tighter, longer lasting fit • Made in Germany



469-59132

ASCOT NO.	MFG. NO.	DESCRIPTION
469-59132	591320	Alligator TPMS Snap-In Replacement Valve

ASCOT NO.	MFG. NO.	DESCRIPTION
469-17245	17-20045	High-Speed TPMS Snap-In Valve Stem
469-17246	17-20046	TPMS Snap-In Valve Stem (Right Angle Key)
469-17395	17-50395	Snap-In Sensor Rubber Valve Stem (Square Key)
469-17397	17-50397	Snap-In Sensor Rubber Valve Stem
469-17539	17-50399	Hyundai TPMS Snap-In Valve



SHORT TPMS REPLACEMENT SNAP-IN VALVE STEM

• Found on custom wheel applications • Addresses clearance issues with inside valve holes • **MAXIMUM COLD INFLATION PRESSURE:** 65 PSI • Parallel key



469-17398

ASCOT NO.	MFG. NO.	DESCRIPTION
469-17398	17-50398	Short TPMS Replacement Snap-In Valve Stem

.625" VALVE HOLE TPMS REPLACEMENT VALVES

• Found on Ford Super Duty Trucks and Sprinter Vans • **MAXIMUM COLD INFLATION PRESSURE:** 150 PSI • Attachment screw and valve cap included



469-17392

469-17393

ASCOT NO.	MFG. NO.	DESCRIPTION
469-17392	17-50392	TPMS Replacement Valve for .625" Valve Hole (Parallel Key)
469-17393	17-50393	TPMS Replacement Valve for .625" Valve Hole (Square Key)

TPMS REPLACEMENT VALVES



469-17218



469-17395



469-17397



469-17590



469-17591



469-17596

ASCOT NO.	MFG. NO.	DESCRIPTION
469-17218	17-20018	TPMS Snap-In Valve for Ford
469-17395	17-50395	TPMS Snap-In Square Key
469-17397	17-50397	Continental Snap-In Rubber TPMS Valve Stem
469-17590	17-50390	Metal TPMS Valve Stem for Ford
469-17591	17-50391	TPMS Metal Clamp-In Valve for TRW Screw-In
469-17596	17-50396	TPMS Valve for Dodge Ram Dually with Aluminium Wheels

VALVE HARDWARE

## TPMS Accessories & Kits (cont.)

### SCHRADER TPMS ACCESSORY KITS

• **The OEM requires that the four sealing components be replaced when re-installing a TPMS sensor** • The replacement components are supplied in TPMS accessory kits, which are sensor specific • **EACH TPMS ACCESSORY KIT CONTAINS:** 1 Nut, 1 Valve Core, 1 Cap, 1 Grommet



469-20097

ASCOT NO.	MFG. NO.	DESCRIPTION
469-20002	20002	Accessory Kit for ford Transmitters - Replaces 469-29601 & 469-23501
469-20004	20004	Accessory Kit for GM Transmitters - Replaces 469-20701 & 469-21601
469-20006	20006	Accessory Kit for Hummer Transmitters
469-20007	20007	Accessory Kit for Alloy Wheel Nissan Transmitters
469-20009	20009	Accessory Kit for Suzuki Replacement Transmitter
469-20010	20010	Accessory Kit for Prowler Replacement Transmitter
469-20012	20012	Accessory Kit for Corvette Replacement Transmitter
469-20013	20013	Accessory Kit for Dodge Nitro Transmitters
469-20014	20014	Accessory Kit for Nissan Transmitters
469-20015	20015	Accessory Kit for GM/TRW Transmitters
469-20017	20017	Accessory Kit for Volkswagen/Siemens Transmitters
469-20018	20018	Replacement Snap-In Valve ford 20315 Transmitter, Box of 50
469-20019	20019	Accessory Kit for Honda/Acura Transmitters
469-20020	20020	TPMS Service Pack - Stem Only - Chrysler, Dodge, Jeep
469-20022	20022	Accessory Kit for Hyundai/Kia Transmitters
469-20023	20023	Accessory Kit for Beru Stems - No Valve
469-20030	20030	Accessory Kit for Chrysler/Siemens Transmitters
469-20031	20031	Accessory Kit for Pacific Transmitters
469-20032	20032	Accessory Kit for Toyota/Pacific Transmitters
469-20035	20035	Accessory Kit for TRW Long Valve Transmitters
469-20036	20036	Accessory Kit for TRW Short Valve Transmitters
469-22008	22008	Assembled Chrome Replacement Snap-In Valve for Schrader 20153 Transmitter
469-20037	20037	Accessory Kit - Silver Insert - for Audi, BMW, Hyundai, Kia, Mercedes, Porsche, VW
469-20038	20038	Accessory Kit - Green Insert - for Audi, BMW, Hyundai, Kia, Mercedes, Porsche, VW
469-20039	20039	Accessory Kit - Black Insert - for Audi, BMW, Hyundai, Kia, Mercedes, Porsche, VW
469-20040	20040	Accessory Kit - Orange Insert - for Audi, BMW, Hyundai, Kia, Mercedes, Porsche, VW
469-20041	20041	Accessory Kit - Schrader Aluminum Grommet Seat for Adjustable angle stem, 25 Pack
469-20043	20043	Accessory Kit - Continental Rubber Snap-in Valve OE# 68193587AB, 50 Pack
469-20046	20046	Accessory Kit for Schrader High-Speed Snap-In, 50 Pack
469-20047	20047	Accessory Kit for Schrader Gen Gamma Adjustable Angle Aluminum Clamp-in Stem, 50 Pack
469-20049	20049	Accessory Kit for Schrader Gen Gamma Adjustable Angle Aluminum Clamp-in Stem (Mercedes), 50 Pack
469-20635	20635	Accessory Kit for TRWI Rubber Snap-in Valve, 50 Pack
469-20895	20895	Replacement T-10 Screws, 100 Pack
469-22005	22005	TPMS Snap-In Dress Up Kit

### SCHRADER TPMS SERVICE PACK ASSORTMENTS

• **The service pack should be replaced every time the tire is removed from the wheel**  
 • With Schrader's NEW assortment kits, always have the service pack you need, when you need it! • These kits include Schrader's 12 most popular service packs on the market today • Kits come in a convenient, durable, plastic case that organizes the service packs for faster, more efficient TPMS service



469-20798



469-20898

ASCOT NO.	MFG. NO.	DESCRIPTION
469-20097	20097	Small Assortment Kit. <b>INCLUDES:</b> 30 Bags (5 ea) Accessory Kits for Each Transmitter Size, 25 Plastic Valve Caps and Core Tool
469-20698	20698	Accessory Assortment Kit w/ EZ-sensor. <b>1 PLASTIC TRAY CONTAINING:</b> 10 Each of Schrader's 12 Most Popular Accessory Kits (20002, 20003, 20004, 20007, 20008, 20013, 20014, 20020, 20023, 20030, 20032, 20036), four 315MHz EZ-sensors 33000 & (2) 433MHz
469-20798	20798	<b>INCLUDES 8 UNITS OF EACH SERVICE PACK:</b> 20004, 20007, 20009, 20013, 20014, 20018, 20020, 20023, 20030, 20032, 20036, 20049
469-20898	20898	<b>INCLUDES 8 UNITS OF EACH SERVICE PACK:</b> 20004, 20007, 20009, 20013, 20014, 20018, 20020, 20023, 20030, 20032, 20036, 20049 6 Programmable, Single SKU EZ-sensors (# 33500)



DILL TPMS ACCESSORY KITS

ASCOT NO.	MFG. NO.	DESCRIPTION
469-00015	VS-15	Rubber Clamp-In Stem for Toyota Corolla Hatchback
469-00031	VS-30	Rubber Snap-In Valve for Nissan Kicks and Nissan Quest
469-00035	VS-35	Clamp-In Replacement Valve for Dodge & 3500 Trucks
469-00065	VS-65	Snap-In Replacement Valve for Dodge 1500, 2500, & 3500 Trucks
469-00919	VS-919	For use in light truck applications fitted with rims with a 0.625 diameter rim hole using the Ford, GM, and Chrysler snap in TPMS sensor design
469-00925	VS-925A	Aluminum Metal Replacement Valve for GM Snap-in & Ford
469-09251	VS-925C	Chrome Replacement Valve for GM & Ford Snap-in
469-09252	VS-925B	Black Nut/Black Cap Metal Replacement Valve for GM & Ford
469-00950	VS-950	Rubber Snap-In Replacement Valve for GM & Ford Transmitters
469-00951	950SC/4PK	TPMS Snap-IN Chrome Sleeve and Cap 4/Pack for VS-950
469-01010	VS-1010	Rubber Snap-In Stem for Hyundai Sante Fe
469-01030	1030K	Siemens Kit for VW (Fits 1053 Sensor)
469-01031	1031K	VW Kit for Special Wheel Package
469-01040	1040K	Siemens Mercedes Assembled Valve
469-01050	1050K	Siemens Kit for Chrysler w/ Special Metal Washer
469-01060	1060K	Kit for Ford, Lincoln, Mercury
469-01070	1070K	Kit for Buick, Cadillac, Chevrolet, GMC, Isuzu, Pontiac, Saab
469-01077	1077K	Accessory Kit for 8006 Sensor, 97-00 Corvette
469-01080	1080K	Kit for Cadillac, Chevrolet, Chrysler, Dodge, Infiniti, Isuzu, Jeep, Mitsubishi, Nissan, Plymouth, Subaru
469-01090	1090K	Compatible with Beru Sensors
469-01091	1091	Ball-seat valve stem assembly; 56mm, yellow marking
469-01092	1092	Ball-seat valve stem assembly; 43mm; silver or no marking
469-01093	1093	Ball-seat valve stem assembly; 48mm, green marking
469-01094	1094	Ball-seat valve stem assembly; 49mm, black marking
469-01095	1095	Ball-seat valve stem assembly; 51mm, orange marking
469-01096	1096	TPMS Stem For Hyundai, Kia, Honda
469-01097	1097	TPMS Stem For Hyundai, Kia, Honda
469-01098	1098K	Dodge Sprinter Replacement Valve
469-01100	1100K	Compatible with Pacific Sensors for Toyota/Lexus
469-01110	1110K	Compatible with Pacific Sensors for Toyota
469-01130	1130K	Kit for Mazda, Mitsubishi, Nissan
469-02040	2040K	Kit fo Hyundai, KIA
469-02045	2045K	Kit for Honda/Acura
469-07000	7000K	Kit for Acura, Chrysler, Dodge, Jeep, Nissan
469-07020	7020K	Kit for BMW, Cadillac, Honda, Hyujndai, Infiniti, Jaguar, KIA, + more & REDI-Sensor
469-20025	2000K	Kit for Acura, Honda, Hyundai, KIA
469-20130	2030K	Kit for Chrysler, Dodge, M-Benz, Nissan
469-21010	2010K	Kit for Saturn, Volvo
469-21020	2020K	Early 2007 GM Kit for Entire Sensors
469-90662	9066K-LS	TPMS Valve Stem Kit with ball joint



469-00035



469-00065



469-00919



469-00925



469-00950



469-01010



469-01092



469-01095

COMPLETE REPLACEMENT KIT FOR CHRYSLER/DODGE TPMS APPLICATIONS

• COMPLETE REPLACEMENT KIT INCLUDES THE FOLLOWING:  
Aluminum TPMS Valve Stem w/ Grommet, Valve Nut, Valve Core



469-90660

ASCOT NO.	MFG. NO.	DESCRIPTION
469-90660	9066-K	Dill Chrysler TPMS Complete Stem Replacement Kit

REPLACEMENT STEM FOR CHRYSLER/DODGE TPMS APPLICATIONS

ASCOT NO.	MFG. NO.	DESCRIPTION
469-90661	9066-1	Dill Chrysler TPMS Replacement Stem Only



469-90661

VALVE HARDWARE



## TPMS Accessories & Kits (cont.)

### UNIVERSAL MASTER TPMS TRANSMITTER HARDWARE & TOOL SERVICE SET

- Versatile 152 piece assortment (15 unique kits) covers over 55 different OEM sensor models and 90% of US vehicles
- **TOOLS INCLUDED:** A Sensor Service Tool, Ratcheting Torque Wrench, 2 Deep Sockets, 2 Torque Drivers and bits

VERSATILE:  
152 PIECES

15 UNIQUE  
KITS



469-30000

ASCOT NO.	MFG. NO.	DESCRIPTION
469-30000	30000	Universal Master TPMS Set

### DILL TPMS 7100 ACCESSORY ASSORTMENT

- **INCLUDES 4 OF EACH KITS:** 1130K, 1030K, 2045K, 1070K, VS-20, VS-90, 1050K, 1080K, 1100K, 2030K, 1110K, 1060K, 2010K, VS-65, 2040K, 2000K, 7020K, 1090K, 7000K and **6 EACH:** VS-950 Stems • Approximately 97% coverage



469-07100

ASCOT NO.	MFG. NO.	DESCRIPTION
469-07100	7100	Dill TPMS Master Accessory Assortment

### DILL TPMS REPLACEMENT STEM ASSORTMENT

- **INCLUDES 4 OF EACH:** VS-65, VS-40, VS-925C, 9066K, 1040K, VS-1010, VS-950, VS-90, VS-925B, VS-20, VS-70 and **2 OF EACH OF THE FOLLOWING:** 1092, 1093, 1094, 1097K, 1096K, VS-965 • Approximately 99% coverage



469-07300

ASCOT NO.	MFG. NO.	DESCRIPTION
469-07300	7300	Dill TPMS Replaceable Stem Assortment





REDI-SENSOR VALVE STEMS



ASCOT NO.	MFG. NO.	DESCRIPTION
469-00045	VS-45	Clamp-In Stem for REDI-Sensor w/ Clip Design, Chrome Plated Brass. Fits 7001HP-R & Certain OE Sensors
469-00770	VS-70	REDI-Sensor Replacement Valve Stem w/ All Components
469-00771	VS-70B	REDI-Sensor Valve with Black Anodized Nut and Black Cap
469-00772	VS-70S	REDI-Sensor Valve Stem with Cap and Core Assembled
469-00773	VS-70C	Chrome Valve Stem Assembly for OE and REDI-Sensor™

RUBBER TPMS SNAP-IN REPLACEMENT VALVES

- Rubber stem and attaching screw for snap-in transmitters
- Cap & core included • Requires T-10 Torx Tool for assembly/ disassembly • VS-1010 requires 5415-2 7mm socket adapter



ASCOT NO.	MFG. NO.	DESCRIPTION	QTY./BOX
469-00015	VS-15	Rubber Snap-In TPMS stem for Toyota; includes stepped screw	4
469-00030	VS-30	Rubber Snap-In TPMS Stem w/ Clip	4
469-00065	VS-65	Snap-In Replacement Valve for Dodge 1500, 2500 & 3500 Trucks	25
469-00090	VS-90	Rubber Valve Stem Kit for New Dodge and GM Transmitters	25
469-00200	VS-20	Rubber Snap-In for GM & Ford Transmitters	25
469-00950	VS-950	Rubber Snap-In Replacement Valve for GM & Ford Transmitters	25
469-01010	VS-1010	Rubber Snap-In Stem for Hyundai Santa Fe	25
469-20018	20018	Replacement Snap-In Valve for Schrader Ford 20315 Transmitter	50

DILL ALUMINUM REPLACEMENT TPMS STEM

- Metal Replacement Clamp-In Valve for GM, Ford, Dodge Ram, Subaru & Suzuki • Made from anodized aluminum • T-10 screw included • QUANTITY: Packaged 20 per box



ASCOT NO.	MFG. NO.	DESCRIPTION
469-00925	VS-925A	Dill Aluminum Replacement TPMS Stem
469-01925	VS-925B	Dill Aluminum Replacement TPMS Stem - Black
469-02925	VS-925C	Dill Aluminum Replacement TPMS Stem - Chrome

TPMS SNAP-IN CHROME SLEEVES AND CAPS



ASCOT NO.	MFG. NO.	DESCRIPTION
469-00951	950SC/4PK	TPMS Snap-In Chrome Sleeve and Cap 4/Pack for VS-950

VALVE HARDWARE



⚠️ WARNING: For more information go to [www.P65Warnings.ca.gov](http://www.P65Warnings.ca.gov).



## TPMS Accessories & Kits (cont.)

### REDI-SENSOR TPMS COMBO KIT

**INCLUDES:** 4 of Each REDI-Sensor (7001HPR, 7002A, 7003A, 7004), (5112A) Service Kit Cabinet (180 pcs) • Receive a FREE 8200 TPMS Tool Kit and 9700 Counter Aid

### REDI-SENSOR TPMS COMBO KIT

**INCLUDES:** 4 of each REDI-Sensor (7001HPR, 7002A, 7003A, 7004), (7100 Kit) Service Kit Assortment (86 pcs) • Receive a FREE 4065 Toolkit and 9700 Counter Aid



469-07415



469-17415

ASCOT NO.	MFG. NO.	DESCRIPTION
469-07415	7415A	REDI-Sensor TPMS Combo Kit

ASCOT NO.	MFG. NO.	DESCRIPTION
469-17415	7415	REDI-Sensor TPMS Combo Kit

VALVE HARDWARE



DILL CLAMP-IN REPLACEMENT TPMS VALVE STEMS



469-00240

469-00241

469-00917

469-00919

ASCOT NO.	MFG. NO.	DESCRIPTION
469-00240	VS-240MC	Silver Chrome Clamp-In 0.453 TPMS Stem. Compatible anywhere a VS-65 or VS-20 is used OEM. Fits Dill 5001/5002; 10 pack.
469-00241	VS-241	Clamp-In TPMS Valve for 2017 Ford Truck & Ram 3500. Includes USA Double Seal Cap. 6 Per Pack.
469-00917	VS-917	Chrome Clamp-In 0.625 TPMS Stem. Used on 700IHP-R REDI-Sensor with Push Button.
469-00919	VS-919	Silver Clamp-In 0.625 TPMS Stem. Compatible anywhere a VS-950 is used OEM.

TPMS KIT FOR REDI-SENSOR



469-07020

469-07000

ASCOT NO.	MFG. NO.	DESCRIPTION
469-07000	7000K	TPMS Kit for OE Sensors
469-07020	7020K	TPMS Replacement Component Kit for REDI-Sensor and OE Sensors

VALVE HARDWARE

# TPMS Tools

## TPMS TORQUE WRENCHES AND SOCKETS

- Perfect for tightening grommet nut to manufacturer specifications
- Periodic calibration recommended



469-10215

469-10315



168-00652

ASCOT NO.	MFG. NO.	DESCRIPTION
168-00652	AS-652H	1/4" Drive Torque Wrench 10-150 In./Lbs.
469-10215	TPMKT015-2	11mm Chrome Socket
469-10315	TPMKT015-3	12mm Chrome Socket

## 1/4" SOCKET DRIVER

- Durable screwdriver handle and a chrome vanadium shank
- Ideal for use with the TPMS 11mm x 12mm flip socket
- 6" Overall Length, 2-1/2" Shank Length
- **MADE IN THE USA**



319-72521

ASCOT NO.	MFG. NO.	DESCRIPTION
319-72521	7252100	1/4" Socket Driver



## VALVE CORE TORQUE TOOL

- Preset torque guarantees correct setting every time on all cores
- Calibrated to 4 in.-lbs. of torque
- Meets the Tire & Rim Association (TRA) specifications for installing valve cores on TPMS applications
- Can be used to install and remove cores in standard valves



469-00044

ASCOT NO.	MFG. NO.	DESCRIPTION
469-00044	TPMS-4VC	Valve Core Torque Tool

## T-10 TORQUE TOOL WITH REPLACEABLE TIP

- Installs replacement snap-in valves to Schrader snap-in transmitters
- Preset to 12 in./lbs.



469-15415

469-20140

ASCOT NO.	MFG. NO.	DESCRIPTION
469-15415	15415	T-10 Torque Tool w/ Replaceable Tip
469-20140	20140	T-10 Torque Tool
469-25415	15415-1	Replacement T-10 Tip
469-35415	5415-2	Replacement 7mm Socket for VS-1010 TPMS Snap-In Stem

## T-20 TORQUE TOOL WITH REPLACEABLE TIP

- Installs replacement Beru clamp-in valves
- Preset to 35 in./lbs.



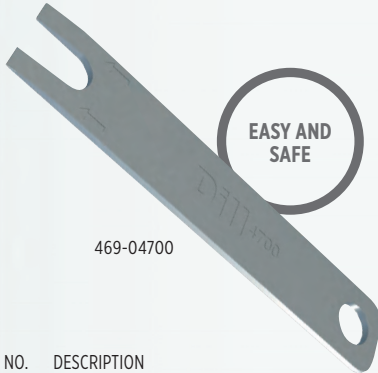
469-15535

ASCOT NO.	MFG. NO.	DESCRIPTION
469-15535	15535	T-20 Torque Tool w/ Replaceable Tip
469-25535	15535-1	Replacement T-20 Tip

VALVE HARDWARE

METAL GROMMET REMOVAL TOOL

- Makes grommet and metal washer installation/removal easy and safe • MADE IN THE USA



469-04700

EASY AND SAFE

ASCOT NO.	MFG. NO.	DESCRIPTION
469-04700	4700	Metal Grommet Removal Tool



VALVE CORE TOOLS: SCREWDRIVER TYPE & STANDARD BORE LONG VALVE

- Has a plastic screwdriver handle for better grip and leverage



469-00612

GOOD GRIP & LEVERAGE

ASCOT NO.	MFG. NO.	DESCRIPTION
469-00607	607	Screwdriver Type Valve Core Tool
469-00612	612	Standard Bore Long Valve Core Tool

469-00607



GROMMET INSTALLATION/REMOVAL TOOL

ASCOT NO.	MFG. NO.	DESCRIPTION
469-20144	20144	Grommet Installation/Removal Tool



469-20144

CORE CAP REMOVAL TOOL

- Easily installs and removes valve caps and valve cores • Two-in-one tool

ASCOT NO.	MFG. NO.	DESCRIPTION
469-20250	20250	Core/Cap Removal Tool



469-20250

SCREWDRIVER/CORE TOOL

- Lock-On Feature For The Valve Core • Metal Pocket Clip
- Flat-Head Screwdriver Tip



ASCOT NO.	MFG. NO.	DESCRIPTION
469-00673	673-D	Screwdriver/Core Tool

469-00673

PRE-SET TORQUE TOOLS FOR TPMS

- Never adjust a TPMS torque wrench again • Durable and long-lasting
- NO MORE TORQUE ERRORS: It is either "Hi" or "Low" • Ergonomically designed hand grip • Open cross chamber on the 5565 allows for extra leverage bar



NO MORE TORQUE ERRORS

DURABLE AND LONG-LASTING

469-05540

469-05565

ASCOT NO.	MFG. NO.	DESCRIPTION
469-05540	5540	TPMS Preset Torque Tool: Preset at 40 in./lb.
469-05565	5565	TPMS Preset Torque Tool: Preset at 65 in./lb.

## TPMS Tools (cont.)



### VALVE STEM WRENCH KIT

• Kit includes 9/16" & 5/8" valve stem wrenches in durable pouch



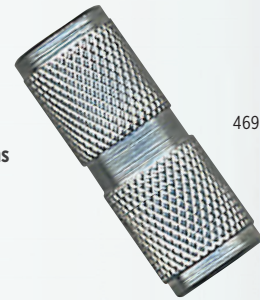
**DURABLE  
POUCH**

469-01820

ASCOT NO.	MFG. NO.	DESCRIPTION
469-01820	VSW-1820-KIT	Valve Stem Wrench Kit
469-00018	VSW-18	9/16" Single Hex Valve Stem Wrench
469-00020	VSW-20	5/8" Double Hex Valve Stem Wrench

### TIRE DEFLATOR/ VALVE CORE REMOVER

• Screws on TPMS valve stems to deflate the tire without removing the valve core



469-00021

ASCOT NO.	MFG. NO.	DESCRIPTION
469-00021	TL-615	Tire Deflator/Valve Core Remover

### TIRE DEFLATOR SET



• Simply replace a standard sized valve cap with this handy tool and the special design will depress the pin in the valve core • Large openings on the sides of the tool allow air to escape quickly from the tire • Tools are marked so tires can be returned to their original position on the vehicle so TPMS will not need to be reset • Also saves time since the valve core has not been removed from the sensor • Packaged in a set of 4



**DEFLATES  
PRESSURE  
SLOWLY**

469-51632

ASCOT NO.	MFG. NO.	DESCRIPTION
469-51632	TD-1808	Tire Deflator Set

### TPMS VALVE STEM FISHING TOOL

• Secures TPMS sensor to wheel during demount • One handle end can be used as a deflator; the other as a core remover • 3" Overall length



469-08910

ASCOT NO.	MFG. NO.	DESCRIPTION
469-08910	8910	TPMS Valve Stem Fishing Tool



### TIRE DEFLATOR SET FOR TPMS VALVE STEMS



469-19860

ASCOT NO.	MFG. NO.	DESCRIPTION
469-19860	19860	Tire Deflator Set for TPMS Valve Stems



TPMS MECHANICAL TOOL KIT



469-10110

ASCOT NO.	MFG. NO.	DESCRIPTION
469-10110	TPMKT01	TPMS Mechanical Tool Kit

TPMS MECHANICAL TOOL KIT CONTENTS:

1/4" Torque Screwdriver 10-80 in./lbs.	1/4" Adapter
Torque Valve Screwdriver 4 in./lbs.	4 Bits: T5, T10, T15 & T20
2 Sockets: 11mm & 12mm	Grommet Tool



TPMS MASTER TOOL KIT

- Accurately and quickly install and remove any TPMS component
- **NO MORE TORQUE ERRORS:** Simplest TPMS set available



469-08200

ASCOT NO.	MFG. NO.	DESCRIPTION
469-08200	8200	Dill TPMS Master Tool Kit

DILL NO.	TYPE	DESCRIPTION
----------	------	-------------

DILL TPMS MASTER TOOL KIT CONTENTS

4700	TPMS Grommet tool	Easily remove and install TPMS valve stem grommets
5540	Speed Torque 40 IN-LB	Fast and accurate TPMS installer for 45 in./lbs. and below Service Kits
5565	Speed Torque 65 IN-LB	Fast and accurate TPMS installer for 65 in./lbs. and above Service Kits
(w/ 5540 & 5565)	Drive Sockets	11mm and 12mm deep well sockets
5414	Valve Core Torque Tool	Installs valve cores to recommended torque (3.5 in./lbs.)
5415	Torque Screwdriver	Torque T-10 screw installation, 12.5 in./lbs. (i.e. VS-950 rubber stem).
5417	Beru Valve Holding Tool	Holds Beru valve in place for easy installation
5535	Torque Screwdriver	Torque T-20 screw installation, 35 in./lbs. (i.e. VS-80 rubber stem)
8910	3-way Fishing Tool	Retains sensor in a secure position, deflates, removes the core
NA	T-bar	May be used for extra leverage with the speed torque tools
N/A	Case	Hard plastic case to keep all of your items secure



TPMS MECHANICAL TOOL KIT



469-04065

ASCOT NO.	MFG. NO.	DESCRIPTION
469-04065	4065	Dill TPMS Mechanical Tool Kit

DILL TPMS MECHANICAL TOOL KIT CONTENTS:

2 Sockets: 11mm & 12mm
40 in./lbs. Preset Torque Driver
65 in./lbs. Torque Driver

# TPMS Transmitters

## SCHRADER OE REPLACEMENT TPMS SENSORS

- Include transmitter, grommet, nut, cap & core

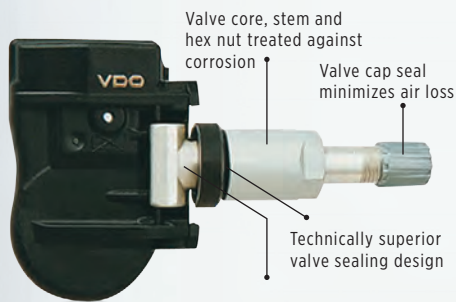


ASCOT NO.	MFG. NO.	O.E. NO.	DESCRIPTION
461-21507	21507	321507	Snap-in Faraday 315MHz GM Global A ASK Basic
461-29020	29020	Multiple	Snap-in Basic Faraday Gen 6 315MHz Ford Global Spec FSK
461-29093	29093	68402371AA	Chrysler Snap-In Type Repl. Transmitter

## REDI-Sensor™

### REDI-SENSOR MULTI-APPLICATION SENSOR

- Installs right out of the box • No programming required, saving you 8-10 minutes per vehicle • Reduces replacement sensor inventory • Adjustable valve stem design • **Fits over 90% of the market** • No additional training required • All REDI-Sensors are available in a rubber stem format



Pivoting valve stem makes installation easier and accommodates a wide range of wheel rim profiles



ASCOT NO.	MFG. NO.	DESCRIPTION
461-07001	7001HP	315MHz REDI-Sensor Multi-Application Sensor (Clamp-In Style)
461-07002	7002A	REDI-Sensor for Honda, Hyundai, Kia, Lexus, Toyota & Scion
461-07003	7003A	315MHz REDI-Sensor Multi-Application Sensor (Clamp-In Style)
461-07004	7004	433MHz REDI-Sensor Multi-Application Sensor (Clamp-In Style)
461-07011	7001HP-R	315MHz REDI-Sensor Multi-Application Sensor (Snap-In Style)





# Dill Replacement TPMS Transmitters

## DILL TIRE PRESSURE MONITORING SYSTEM (TPMS) TRANSMITTERS

• **INCLUDES:** Transmitter, grommet, nut, cap & core

ASCOT NO.	MFG. NO.	DESCRIPTION
461-01027	1027	Huf BMW
461-01029	1029	Entire Kia Spectra/Rio
461-01043	1043	Siemens 2008 Chrysler
461-01044	1044	2007-2008 Volvo
461-01045	1045	2008-2011 Land Rover - 315 MHz
461-01052	1052	Siemens 2004 Chrysler
461-01055	1055	Siemens Land Rover/Jaguar
461-01056	1056	Siemens Mazda
461-01068	1068	Hyundai/Kia
461-01203	1203	Toyota - 40 Degree Angle
461-01208	1208	Honda Accord/CRV/Fit
461-01209	1209	Honda Pilot/Some Acura
461-01212	1212	Honda Civic
461-01214	1214	Honda/Acura
461-01216	1216	Nissan
461-01217	1217-WH	Lexus SC 430 White
461-01218	1218	2012 Toyota Camry, Yari
461-01222	1222	Hyundai - Only Use w/ Bartec Rev.
461-01225	1225	2014 Highlande/RAV4 RKE
461-01230	1230	2015 Toyota Camry
461-01382	1382	Nissan Titan XD
461-02112	2112	Tesla
461-02168	2168	2015-16 Tesla
461-02510	2510	2014-2015 Kia Tucson/Sportage/Forte
461-03751	3751	2016 Honda Pilot
461-05134	5134	2015 Volvo
461-05256	5256	2014 BMW
461-05276	5276	2015 Land Rover
461-05507	5507	Hyundai/Kia
461-05510	5510	2015 Hyundai Genesis/Santa Fe
461-05511	5511	Honda/Acura
461-05512	5512	2013 Acura RDX
461-05513	5513	2013 Acura ILX

ASCOT NO.	MFG. NO.	DESCRIPTION
461-05514	5514	Acura ILX/MDX//RDX/TLX
461-05523	5523	2017 Hyundai Elantra/Kia Sportage
461-05555	5555	Nissan
461-05556	5556	2013 Nissan Altima/Pathfinder
461-05557	5557	Nissan
461-05558	5558	2014 Infiniti Q50
461-05559	5559	2014 Nissan Rogue
461-05775	5775	2013 Dodge Dart
461-06815	6815	2014 Dodge Ram/Jeep Cherokee
461-06825	6825	Snap-In Rubber Stem and Sensor for Inner Dual on Dodge Ram
461-06829	6829	Clamp-In Stem and Sensor for Outer Alloy on Dodge Ram
461-09001	9001	HUF RDE 001 for Audi/Mercedes - 433MHz
461-09002	9002	HUF RDE 002 for BMW 3/5/7 Series - 433 MHz
461-09003	9003	HUF RDE 003 for BMW X5/Land Rover - 433MHz
461-09004	9004	HUF RDE 004 for Mercedes
461-09005	9005	HUF RDE 005 Cayenne/Touareg - 433 MHz
461-09011	9011	2010 Audi
461-09012	9012	2010 BMW, Mini Cooper
461-09013	9013	2013 Volkswagen CC
461-09017	9017	2013 BMW 3-Series
461-09018	9018	2014 Panamara
461-09159	9159	2008+ Saab 9-3
461-09204	9204	Nissan
461-09280	9280	2015 Ford Mustang/F-150 Series
461-09342	9342	Nissan NV
461-09398	9398	Chrysler Snap-In
461-09505	9505	Hyundai Velostar, Azera
461-11204	1204	Toyota/Lexus
461-11217	1217-BL	Lexus SC 430 Blue
461-21217	1217-RD	Lexus SC 430 Red
461-31217	1217-YL	Lexus SC 430 Yellow



461-01043



461-01051



461-01212



461-06815



461-09011



461-01057

VALVE HARDWARE

# Aftermarket TPMS Accessory Kits

## AFTERMARKET TPMS ACCESSORY KITS

ASCOT NO.	MFG. NO.	DESCRIPTION	ASCOT NO.	MFG. NO.	DESCRIPTION
468-17490	17-490T	TPMS High Temp (Red) Valve Core Nickel Plated	469-17218	17-20018	TPMS Ford Rubber Snap-In Valve
468-17491	17-490TY	TPMS High Temp Valve Core, Nickel Plated, YELLOW Band	469-17221	17-20201AK	TPMS Parts Kit for Chrysler, GM Applications
468-17492	17-492L-1	Long Skirted Black Plastic Cap with Seal for 17-20008	469-17222	17-20202AK	TPMS Parts Kit for Audi, Mercedes, Volkswagen Applications
468-17493	17-493NP	Chrome Plated Plastic Cap, Green Top	469-17223	17-20203AK	TPMS Parts Kit for Audi, Mercedes Application
468-17592	17-492T-1	Gray Plastic TPMS Valve Cap with Red Silicone Seal	469-17224	17-20204AK	TPMS Parts Kit for Acura, Honda, Kia Applications
468-17593	17-493P	Chrome Plated Plastic Cap	469-17226	17-20206AK	TPMS Parts Kit for Hyundai, Honda, Kia Applications
468-17692	17-492LG-1	Long Skirted GREEN Plastic Cap with Seal for 17-20008	469-17227	17-20207AK	TPMS Parts Kit for Volkswagen Applications
469-17107	17-20107AK	TPMS Parts Kit for GM Applications	469-17228	17-20028AK	TPMS Parts Kit for Chrysler, Dodge, Mitsubishi Applications
469-17198	17-20198AK	TPMS Parts Kit for Dodge Sprinter Applications	469-17235	17-20035AK	TPMS Parts Kit for Honda Applications
469-17205	17-20005AK	TPMS Parts Kit for Nissan Applications	469-17236	17-20036AK	TPMS Parts Kit for Acura, Honda, Kia Applications
469-17206	17-20006AK	TPMS Parts Kit for GMC, Hummer, Isuzu Applications	469-17272	17-20720AK	TPMS Parts Kit for Conti OE Sensors & Redi-Sensor
469-17207	17-20007AK	TPMS Parts Kit for Nissan, Infiniti Applications	469-17275	17-20725AK	TPMS Service Kit with Valve
469-17208	17-20008	GM TPMS Rubber Snap-In Valve	469-17296	17-20096AK	TPMS Parts Kit for Ford Applications
469-17209	17-20009AK	TPMS Parts Kit for Saab, Suzuki Applications	469-17311	17-20211AK	TPMS Parts Kit for Misc. Import Applications
469-17210	17-20010AK	TPMS Parts Kit for Volvo Applications	469-17316	17-20216AK	TPMS Parts Kit for Lexus/Toyota Applications
469-17211	17-20011AK	TPMS Parts Kit for Subaru Applications	469-17317	17-20217AK	TPMS Parts Kit for Lexus/Toyota Applications
469-17212	17-20012AK	TPMS Parts Kit for Prowler, Corvette Applications	469-17320	17-20020	TPMS Stem Only for Chrysler, Dodge, Mercedes
469-17213	17-20013AK	TPMS Parts Kit for Dodge, Jeep, Chrysler Applications	469-17321	17-20221AK	TPMS Parts Kit for Lexus SC430 Applications
469-17214	17-20014AK	TPMS Parts Kit for Nissan, Infiniti Applications	469-17323	17-20223AK	TPMS Parts Kit for GM (SS Corvette)
469-17215	17-20015AK	TPMS Parts Kit for GM with TRW Clamp-In Sensor	469-17420	17-20020AK	TPMS Parts Kit + Stem for Chrysler, Dodge, Mercedes Applications
469-17216	17-20016AK	TPMS Parts Kit for Mercedes, Smart Applications	468-17792	17-492-1	Black Plastic Valve Cap w/ Red Silicone Seal



469-17208



469-17210



469-17211



469-17275

# Smart Sensor Pro+

## SMART SENSOR PRO+ PROGRAMMING/SCANNING TOOL

- Quickly & easily program Smart Sensor “blank” sensors to emulate the protocol
- Program a Smart Sensor in seconds
- Copies the original sensor ID to Smart Sensor
- Recognized by specific vehicles
- Scans OE sensors
- Free lifetime updates
- Replacement Sensors and stems available



469-17144



The Smart Sensor Pro+ Programming/Scanning Tool with Replacement Sensors\* (available separately).

ASCOT NO.	MFG. NO.	DESCRIPTION
469-17144	17-144	Smart Sensor Pro+ Programming/Scanning Tool



## SMART SENSOR ONE UNIVERSAL TPMS SENSORS & REPLACEMENT STEMS

- Combines 314.9 MHz, 315 MHz & 433.92 MHz all in one sensor
- 99% vehicle application coverage
- Reduces TPMS service time
- Reduces Inventory
- Truly universal/programmable sensor
- Supports future vehicle applications & Auto-Locate technologies (WAL, PAL, LocSync)
- Manufactured & tested to OE specifications & quality/performance standards



461-17441

461-17442



469-17446

469-17447

469-17448



469-17449

469-17450

469-17452

ASCOT NO.	MFG. NO.	DESCRIPTION
461-17441	17-43041	Smart Sensor One Universal TPMS Sensor w/ Rubber Snap-In Valve
461-17442	17-43042	Smart Sensor One Universal TPMS Sensor w/ Metal Clamp-In Valve
469-17446	17-43046	Rubber Snap-In Valve for Smart Sensor One
469-17447	17-43047	Gloss Black Valve for Smart Sensor One
469-17448	17-43048	Matte Black Valve for Smart Sensor One
469-17449	17-43049	Aluminum Valve for Smart Sensor One
469-17450	17-43050	Polished Chrome Valve for Smart Sensor One
469-17452	17-43052	Valve Adapter for Smart Sensor One

VALVE HARDWARE



### PRO+ SMART SENSOR OBDII MODULE

- Turns your Smart Sensor Pro+ Tool into a complete TPMS service tool capable of performing both stationary and OBDII relearns
- Perform OBDII relearns on Asian and Domestic vehicles where OBDII is required, when installing a new sensor or rotating tires
- Download TPMS sensor ID's from the ECU for advanced diagnostics

Turns your Smart Sensor Pro+ Tool into a complete TPMS service tool capable of performing both stationary and OBDII relearns.



469-17145

ASCOT NO.	MFG. NO.	DESCRIPTION
469-17145	17-144-2	Pro+ Smart Sensor OBDII Module - 2-Piece Kit

### SMART SENSOR ELITE BLUETOOTH TOOL OBDII MODULE

- **WIRELESS:** No cable necessary
- Perform OBD II relearns
- Greatly simplifies relearn process on Mitsubishi vehicles



469-17141

ASCOT NO.	MFG. NO.	DESCRIPTION
469-17141	17-140-1	Smart Sensor Elite Bluetooth Tool OBDII Module

### SMART SENSOR ELITE PROGRAMMING & DIAGNOSTIC TOOL KIT

- **Easy to Follow Icon Based Interface** • Perform both Stationary & OBDII relearns with ease
- Comprehensive relearn procedures built-in the tool
- TPMS placard adjusting
- Read sensor IDs by OBDII & copy directly onto a Smart Sensor
- Simple wireless update
- OE Sensor Information including part no. & ID Locator
- **VIN CODE SCANNER:** Fast & accurate
- **CAPTURED TIRE IDENTIFICATION NUMBER (TIN):** Aids in tire registration process
- Upload VIN/TIN, via PC, to dealer's shop software
- Print TPMS & VIN/TIN data via PC



469-17140

EASY ICON INTERFACE



#### SMART SENSOR ELITE PROGRAMMING & DIAGNOSTIC TOOL KIT CONTENTS

Smart Sensor Elite Programming and Diagnostic Tool	Robust Commercial Grade, OBD II Cable
Micro USB Data Cable and Charger	TPMS Activation Magnet

ASCOT NO.	MFG. NO.	DESCRIPTION
469-17140	17-140	Smart Sensor Elite Programming & Diagnostic Tool Kit



# Tubeless Tire Valves (Passenger)

## SNAP-IN TUBELESS TIRE VALVES

• Dill, Schrader or equivalent available

ASCOT NO.	TR NO.	EFFECTIVE LENGTH
<b>FOR .346" VALVE HOLES</b>		
461-00438	438	11/32"
<b>FOR .453" VALVE HOLES</b>		
461-00412	412	7/8"
461-00413	413	1-1/4"
461-00414	414	1-1/2"
461-00418	418	2"
461-00423	423	2-1/2"
<b>FOR .625" VALVE HOLES</b>		
461-00415	415	1-1/2"
461-00425	425	2"



## CHROME-SLEEVE SNAP-IN TYPE TUBELESS TIRE VALVES

• Standard snap-in type tubeless tire valves are fitted with an attractively designed hexagon valve cap and chrome sleeve to cover the valve stem area  
• Available in two lengths to fit .453" valve holes

ASCOT NO.	TR NO.	EFFECTIVE LENGTH
461-41211	412SC	7/8"
461-41311	413SC	1-1/4"
461-41811	418SC	2"



## HIGH PRESSURE SNAP-IN VALVES

• Tubeless snap-in type valves for high pressure applications • Maximum cold inflation pressure is 80 PSI • For .453" or .625" rim holes • Do not use on tire rims that exceed .205" in thickness at the valve hole

ASCOT NO.	TR NO.	EFFECTIVE LENGTH	VALVE HOLE DIAMETER
461-00600	600HP	1.27"	.453"
461-00602	602HP	2"	.453"
461-00801	801HP	1.25"	.625"
461-00802	802HP	2"	.625"



## CLAMP-IN TUBELESS TIRE VALVES

• Nickel plated metal valves can be installed in all passenger cars, light trucks and industrial rims with .453" or .625" valve holes • Rubber grommet forms a seal when valve is clamped to rim by tightening hex nut • Maximum inflation pressure is 200 PSI • Includes 2 rubber grommets

ASCOT NO.	TR NO.	EFFECTIVE LENGTH
462-00416	416	1-1/4"
461-01416	416L	2"



## REPLACEMENT GROMMETS

• Replacement grommets for .453" and .625" valve holes

ASCOT NO.	TR NO.	EFFECTIVE LENGTH
468-59765	RG-54	Grommet for .453" Hole
468-99393	RG-39	Grommet for .625" Hole



468-59765

## HIGH PERFORMANCE VALVE

• Chrome plated clamp-in valves are easily installed in all types of passenger car wheels • For .453" or .625" valve holes

ASCOT NO.	MFG NO.	DESCRIPTION
462-00800	VS-944	High Performance Valve



462-00800

## ENKEI VALVES

• A high performance "No Show" type chrome plated valve that installs from the outside • A rubber washer and nut are on the inside • Fits .453" diameter hole



ASCOT NO.	MFG NO.	DILL NO.	DESCRIPTION
462-06010	TV-6010	VS-934E	3/4" Length, Standard
462-06020	TV-6020	VS-933E	Bent at 45° Angle
462-06030	TV-6030	VS-936E	1-1/4" Length, Standard
462-06040	TV-6040	VS-935E	1-3/4" Length, Standard



462-06020



462-06040

## HIGH PRESSURE CHROME SLEEVE TIRE VALVE

• Used to 80 PSI cold inflation pressure • Fits .453" diameter valve hole, maximum rim thickness .205" at valve hole • Chrome sleeve

ASCOT NO.	TR NO.	DESCRIPTION
461-01600	600HPC	High Pressure Chrome Sleeve Tire Valve



461-01600



IMPORTANT: Snap-in passenger valve stems are safe for tire pressures up to a maximum of 65 PSI (cold tire pressure) and for a maximum rim thickness of .156" (3.9mm). If greater pressure or rim thickness is required, metal clamp-in valve stems are recommended.

# Tubeless Tire Valves (Truck)

## TRUCK & BUS TUBELESS TIRE VALVES: 570 SERIES

- Used on both demountable and non-demountable rims with standard 5/8" (.625") side hole valve mountings • Heavy duty rubber grommet forms airtight seal when valve is clamped in rim by tightening the hex nut • Eight valves cover all truck rim requirements • Available in custom bends • Dill or Haltec equivalent available

ASCOT NO.	TR NO.	EFFECTIVE LENGTH
463-00575	575	1-1/8"
463-00501	501	1-1/2"
463-00500	500	2"
463-00570	570	3-1/8"
463-00571	571	3-3/8"
463-00572	572	3-3/4"
463-00573	573	4-3/8"
463-00574	574	5"



## REPLACEMENT VALVE COMPONENTS

- Packaged 100 per Box

ASCOT NO.	DILL NO.	DESCRIPTION
468-00103	100-TB	Dill Replacement Core
468-00462	462G	Dill Green High Temp Grommet
468-00765	765	Dill Replacement Dome Cap
468-01462	462-F	Dill Red High Temp Grommet (-50F to 400F)
468-02462	462	Dill Black Rubber Grommet

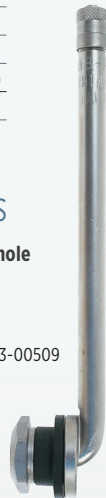


## TUBELESS VALVES FOR ALUMINUM DISC WHEELS

- For drop-center aluminum disc wheels with 5/8" bottom valve hole

ASCOT NO.	TR NO.	EFFECTIVE LENGTH
463-00509	509	4-3/4"
463-00510	510	5-1/2"
463-00511	511	4-1/4"
468-05093	509-3	Replacement Rubber Grommet

463-00509



## NITROGEN O-RING & SLEEVES

- Fits 540 and 570 Truck Valves
- Nitrogen use in truck tires

ASCOT NO.	TR NO.	DESCRIPTION
468-00307	TS-OR	O-Ring
468-00607	NITSLV	Indicator Sleeves



468-00307

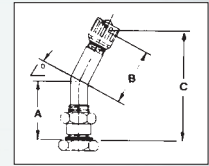


468-00607



## ALUMINUM WHEEL TRUCK TUBELESS TIRE VALVES: 540 & 550 SERIES

- Designed for use with 9.7mm (.382") rim hole • Rubber O-ring forms a seal when valve is clamped to rim by tightening hex nut
- Designed specifically for use in aluminum wheels • Dill or equivalent available • 550 Series equipped with rubber grommet



ASCOT NO.	TR NO.	A	B	C
<b>540 SERIES</b>				
463-00542	542	1.25"	—	—
463-00543	543	2.31"	—	—
463-00544	544	2.86"	—	—
463-00545	545	3.50"	—	—
463-00546	546	4.25"	—	—
463-01544	544C	0.86"	1.94"	45°
463-05433	543C	0.93"	1.43"	45°
463-05434	543D	0.98"	1.38"	60°
463-05435	543E	0.98"	1.38"	75°
463-05444	544D	0.98"	1.94"	60°
463-05454	545D	0.98"	2.60"	60°
463-05464	546D	0.98"	3.35"	60°
463-05465	546E	0.98"	3.35"	75°
463-05474	547D	0.98"	3.78"	60°
463-15454	545E	0.98"	2.60"	75°
463-54636	546-36	0.98"	3.35"	36°
468-10060	RG-60	Repl. O-Ring TR-540 Series		

463-01555

ASCOT NO.	TR NO.	A	B	C
<b>550 SERIES</b>				
463-00552	552	1.25"	—	—
463-00553	553	2.31"	—	—
463-01553	553C	0.93"	1.43"	45°
463-02553	553D	0.98"	1.38"	60°
463-03553	553E	0.98"	1.38"	75°
463-03554	554C	.98"	1.94"	45°
463-02554	554D	0.98"	1.94"	60°
463-01555	555D	0.98"	2.60"	60°
463-02555	555E	0.98"	2.60"	75°
468-10070	RG-70	Grommet for 550 Series		

## METRIC RIM HOLE VALVES (9.7MM VALVE HOLE)

- Some imported trucks will have steel wheels that incorporate the 9.7mm valve hole (.382")
- Most popular valves for this application
- Other sizes available upon request

ASCOT NO.	MFG NO.	ETRTO	BEND	A	B
462-04100	41 MS-00	V3-20-1	STR	1-3/16"	—
462-06027	60 MS-27	—	27°	1-3/16"	1-3/16"
462-07025	70 MS-27	V3-20-5	27°	1-3/16"	1-9/16"
462-08027	80 MS-27	V3-20-7	27°	1-3/16"	2"
462-09027	90 MS-27	V3-20-4	27°	1-3/16"	2-3/8"
462-11527	115 MS-27	V3-20-6	27°	1-3/16"	3-3/8"
468-00707	70 MS-7	—	7°	—	—



462-09027

468-00707



# Truck & Specialty Valves

## RADIAL COMMANDER VALVE FOR 15" DISC WHEELS

• **23° bend clamp-down valve for .625" valve hole** • Bend allows clearance of brake drum for tire service • Cap and core not included

ASCOT NO.	MFG NO.	DESCRIPTION
462-01147	VS-1223R	Radial Commander Valve. Made in the USA.
462-01224	VS-1224	Longer Radial Commander Valve for Equal Applications



462-01224

## VALVE FOR 16 X 6KS WITH OVAL HOLE

• **Oval rim slot valve for 16 x 6KS and 16 x 6-1/2LS rim contours** • Allows a positive seal in this special valve hole • Check the valve hole for metal burrs prior to installation

ASCOT NO.	MFG NO.	DESCRIPTION
462-05010	H5010V	Oval Rim Slot Valve



462-05010

## TRUCK/BUS SCREW-ON REPAIR VALVES

• **Replace damaged cured-in or cured-on valves without cutting out old valve base** • 1-1/16" horizontal diameter

ASCOT NO.	MFG NO.	EFFECTIVE LENGTH
463-01177	1177A	3-3/4"
463-01175	1175A	4-1/2"
463-01078	1078A	5"



463-01078

## TRACTOR FRONT WHEEL VALVES

• **Low profile valve offers minimum protrusion above the rim** • 9/16" effective length with chrome finish • Fits .453" or .625" valve holes

ASCOT NO.	MFG NO.	DESCRIPTION
462-06008	TV-6008C	Tractor Front Wheel Valve With Chrome Finish
462-16008	TV-6008	Tractor Front Wheel Valve With Brass Finish



462-06008

## TUBELESS MOTORCYCLE VALVE

• **Has O-ring seal** • Fits .327" valve holes • **EFFECTIVE LENGTH: 1-13/16"**

ASCOT NO.	MFG NO.	DESCRIPTION
462-00430	TR-430	Tubeless Motorcycle Valve



462-00430

## ALLOY VALVE

• **Light alloy valve used on racing and light alloy wheels** • Fits .453" valve hole • Has O-ring seal

ASCOT NO.	MFG NO.	DESCRIPTION
462-00523	H-523MS	Alloy Valve



462-00523

## SPECIAL CLAMP-IN TIRE VALVE

• **Designed for front wheel drive Toronado ('66-'78) and Eldorado ('67-'78) cars**

ASCOT NO.	MFG NO.	DESCRIPTION
462-00417	417	Special Clamp-In Tire Valve



462-00417

## FORD "F" SERIES TRUCK VALVE

• **Ford F-Series Trucks with inner dual wheels** • Sealing metal cap • 0.453" valve hole • Torque 25-45 inch/lbs.

ASCOT NO.	MFG NO.	DESCRIPTION
462-00962	VS-962C	Ford "F" Series Truck Valve



462-00962

## FORD "F" SERIES TRUCK VALVE

• **Ford "F" series with dual wheels** • Accuride steel 16" x 16" • Front and rear wheels • Nickel finish • Includes dual seal cap

ASCOT NO.	MFG NO.	DESCRIPTION
462-02416	TV-416MC	Ford "F" Series Valve



462-02416

VALVE HARDWARE

## Truck &amp; Specialty Valves (cont.)



## FORD "F" SERIES TRUCK VALVE

- Ford "F" series with dual wheels • Alcoa aluminum 16" • Front and rear wheels
- Chrome finish • Includes dual seal cap

ASCOT NO.	MFG NO.	DESCRIPTION
462-01600	N-1600	Ford "F" Series Truck Valve



462-01600

## FORD "F" SERIES VALVE

- Ford "F" series with dual wheels
- Accuride steel 19.5" • Front and rear wheels
- Nickel finish • Includes dual seal cap

ASCOT NO.	MFG NO.	DESCRIPTION
462-03416	TV-416/DS-1	Ford "F" Series Valve



462-03416

## FORD "CUT-AWAY" SERIES VALVE

- Ford "cut-away" series with dual wheels • Accuride steel 16" x 16" wheels • Front and rear wheels • Nickel finish • Includes dual seal cap

ASCOT NO.	MFG NO.	DESCRIPTION
462-01416	TV-416LF	Ford "F" Series Valve



462-01416

## FORD "CUT-AWAY" AND CARGO VAN SERIES VALVE

- Ford "cut-away" and Cargo van series with single rear wheels • Accuride steel 16" x 7" wheels • Front and rear wheels • Chrome Finish

ASCOT NO.	MFG NO.	DESCRIPTION
462-01575	TV-575HP/DS-1	Ford "Cut-Away" & Cargo Van Series



462-01575



## O-RING SEAL SILICONE TRUCK VALVES

- Handles any type of high temp application
- Operating temperature from -67 °F to 500 °F
- Seals between the rim and valve more effectively
- REPLACEMENT O-RINGS AVAILABLE (Dill 495)

HANDLES  
HIGH  
TEMPS

-67 ° F TO  
500 ° F



463-01572



469-02572

ASCOT NO.	MFG. NO.	DESCRIPTION
463-01571	VS-571-EQ	O-Ring Silicone Truck Valve for TR571
463-01572	VS-572-EQ	O-Ring Silicone Truck Valve for TR572
463-01573	VS-573-EQ	O-Ring Silicone Truck Valve for TR573
469-02570	VS-570EQ	O-Ring Silicone Truck Valve for TR570
469-02572	VS-572EQ-13	O-Ring Silicone Truck Valve for TR572 - 13° Bend
469-02573	VS-573EQ-13	O-Ring Silicone Truck Valve for TR573 - 13° Bend
469-29021	VS-902W	Low profile Chrome clamp-in tire valve; effective length 1.32"; 0.453" valve hole; torque: 25-45 in. lbs.
469-29022	VS-902WP	VS-902 with flow thru cap; effective length: 2.00" w/ cap installed; 0.453" valve hole; torque: 25-45 in. lbs. (Cross ref: N-1600)
469-29023	VS-902K	TR-416S; For Ford F-Series outer steel wheels (brass); Effective length: 1.96"; 0.453" valve hole; Torque: 25-45 in. lbs.; Made in USA (Cross ref: TV-416/DS-1)
469-29621	VS-962WZ	Chrome clamp-in tire valve with 23° bend w/ plated flow thru cap; Effective length: 2.32" w/ cap installed; 0.453" valve hole; torque: 25-45 in. lbs.





### NUT SPLITTER

- Removes brass tire valves from truck rims
- Available in manual and pneumatic

ASCOT NO.	MFG. NO.	DESCRIPTION
469-00580	NS58B	Manual Nut Splitter
469-00590	NS59B	Pneumatic Nut Splitter. Attaches to Pneumatic Hammer



### VALVE NUT TORQUE WRENCHES

- Wrench flexes when proper torque setting is reached
- Prevents overtightening of the valve grommet
- Cushioned handle
- Sizes and preset torque settings laser etched on shaft
- 9/16" for TR570 series valve hex nuts
- 5/8" for TR540-550 series valve hex nuts
- +/- 4% accuracy

ASCOT NO.	MFG. NO.	DESCRIPTION
168-00916	NSPTW916	9/16" Preset Valve Torque Wrench - 42 in./lb.
168-00058	NSPTW58	5/8" Preset Valve Torque Wrench - 100 in./lb.



### VALVE BLASTER TRUCK VALVE STEM REMOVAL TOOL

- Removes valves quickly
- Slide hammer with an internal spring absorbs the shock of impact
- Easy to use
- Designed to shear the bottom flange off the valve with one or two blows
- OAL - 63"

ASCOT NO.	MFG. NO.	DESCRIPTION
469-22011	VB	Valve Blaster Truck Valve Stem Removal Tool
469-22012	RE	Replaceable End for Valve Blaster Truck Stem Removal Tool



### VALVE BREAKER

- Removes valves quickly
- Slide hammer with an internal spring absorbs the shock of impact
- Easy to use
- Designed to shear the bottom flange off the valve with one or two blows

ASCOT NO.	MFG. NO.	DESCRIPTION
469-35934	35934	27" Valve Breaker
469-32011	35936	45" Valve Breaker
469-32012	35935	Valve Breaker Parts Kit



### DILL TRUCK VALVE TOOL KIT

- Tool kit for alloy and steel truck wheels
- Allows you to accurately inspect, gauge and install truck valves with pre-set torque tools
- Follows industry guidelines and valve hole measurements

ASCOT NO.	MFG. NO.	DESCRIPTION
469-05700	5700	Dill Truck Valve Tool Kit w/ 2 Open-End Torque Tools
469-05720	5720	Dill Truck Valve Tool Kit w/ 1 Open-End and 1 Straight Torque Tool
469-15720	5720-Poster	Wall Poster of Accurate Truck Valve Installation and Inspection Processes



VALVE HARDWARE

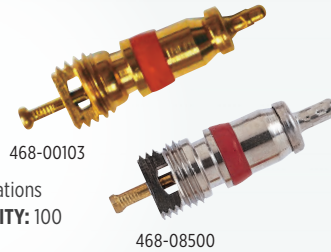


⚠️ WARNING: For more information go to [www.P65Warnings.ca.gov](http://www.P65Warnings.ca.gov).

# Valve Caps, Cores & Extensions

## STANDARD VALVE CORES

- Valve cores all have .206"-36" threads and are compatible with existing U.S.A. and E.T.R.O. housing standards as well as proposed I.S.O. standards -meets specification ZZ-V-25 and TR C-1 • 5405V recommended for all truck, bus and commercial applications; general purpose heat-resistant applications
- 8500TV for general purpose valve use • **STANDARD PACK QUANTITY: 100**



ASCOT NO.	MFG. NO.	OPERATING PRESSURE RANGE	OPERATING TEMP RANGE (F)	OPENING PRESSURE	PLUG SEALING MATERIAL	PLUNGER SEALING MATERIAL
468-00103	100-TP	Up to 300 PSI Max	-65° To +250°F	80 PSIG	Teflon	Silicone
468-08500	8500TV	0-200 PSI - Peaks Of 300	-40° To +225°F	60 PSIG	Green Teflon	Black Nitrile

## PASSENGER VALVE CAPS

- Fits .305"-32" threads on standard type valves



ASCOT NO.	MFG. NO.	DESCRIPTION	TR NO.	PACK SIZE	FINISH
468-00107	Cap-P	Plastic Valve Cap	-	100	Plastic
468-00207	CAP-PG	Green Plastic Nitrogen Cap	-	100	Plastic
468-00660	VC8	Standard Black Plastic Valve Cap	VC8	-	Plastic
468-00680	680	N2 Aluminum Cap for TPMS With Adhesive Green Ring	-	100	Aluminum
468-00690	690	N2 Plastic Painted Metallic Silver Cap for TPMS With Adhesive N2	-	100	Plastic
468-05005	2413CS	Combination Cap/Sleeve for TR413	TR413	-	Chrome
468-59019	59-0019	Green Nitrogen Indicating Aluminum Valve Cap	-	100	Aluminum
468-59021	59-0021	Chrome Plated Nitrogen Indicating Brass Valve Cap	-	100	Aluminum

## TRUCK VALVE CAPS



ASCOT NO.	MFG. NO.	DESCRIPTION	TR NO.	SEALING WASHER MATERIAL	OPERATING PRESSURE	OPERATING TEMP RANGE (F)	PACK SIZE	FINISH
468-00765	765	Dill Dome Cap	VC3	Nitrile	0-200 PSI	-40° To +165°F	100	Nickel Plated
468-00632	632	Dill High Temp Dome Cap	VC3	Plastic	100 PSI	-40° To +250°F	100	Nickel Plated
468-00102	6300V	All Purpose Cap With Screwdriver Top For Removing/ Inserting Valve Cores	VC2	Nitrile	0-200 PSI	-40° To +165°F	100	Nickel Plated



## PASSENGER VALVE CAPS



ASCOT NO.	MFG. NO.	DESCRIPTION	QTY./ BOX
468-06300	630N	Gray Plastic TPMS Cap (Tall)	100
468-00635	635	Black Plastic TPMS Cap for VS950 Applications	100
468-00650	650	Gray Plastic TPMS Cap (Short)	100

## DOUBLE SEALING VALVE CAPS

- Light weight design uses both high temperature and low temperature resistant airtight seals at extension tip and valve mouth • External grooves accommodate all industry standard air chucks and gauges • Knurled surface for easy hand installation • Increases productivity • **MADE & TESTED IN THE USA**



ASCOT NO.	MFG. NO.	DESCRIPTION	QTY./ BOX
468-06541	6541N	Double Seal Valve Cap	50
468-16541	6541N	Double Seal Valve Cap	250
468-26451	6541A	Double Seal Valve Cap, Nickel, Grooved	50 or 250
468-36541	6541B	Double Seal Valve Cap, Brass	500
468-46541	6541N	Double Seal Valve Cap, Nickel, Threaded	50, 250 or 500
468-56541	6541P	Double Seal Valve Cap, Chrome Plated	500





**THE ORIGINAL ALLIGATOR V2B DUAL SEAL CAP**

- Made in Germany by Alligator • Increased tire life
- Lower fuel consumption
- Safety for driver and vehicle



468-02222 V2B



ASCOT NO.	MFG. NO.	DESCRIPTION	QTY./BOX
468-02222	V2B-50	Alligator V2B Dual Seal Cap	50
468-12222	V2B-250	Alligator V2B Dual Seal Cap	250



**DOUBLE SEAL CAP**

- A time, money and labor saving alternative to common valve caps • Reduce pressure check time by 65% • Designed for high pressure truck tire service
- Inflate, deflate or gauge directly thru the DS-1 • Saves time during inflation and pressure checks • Automatic inflation systems lock right onto the DS-1 • Seals like a high pressure cap, yet offers the convenience of an inflate thru extension • Performs like a check valve, the seal becomes tighter in the event of a core failure • Heat resistant grommets provide additional protection for extended high temperature running
- Features tough all metal housing, precision fit brass components and durable self-sealing O-Ring



468-04191 DS-1

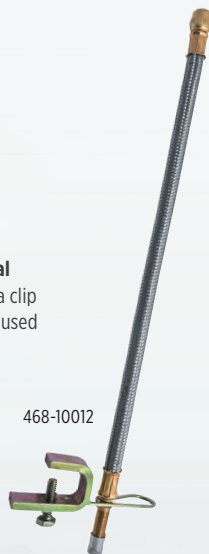
ASCOT NO.	MFG. NO.	DESCRIPTION
468-04191	DS-1	Double Seal Cap



**DUAL WHEEL EXTENSIONS**

- For convenient air service access to inner rear dual wheels • Fit standard valve cap threads and include a clip to secure the extension to the wheel cutout • Can be used on campers, recreational vehicles and light trucks

ASCOT NO.	MFG. NO.	EFF. LENGTH
468-10017	9059-7	7"
468-10019	9059-9	9"
468-10012	9059-12	12"
468-10010	9059-U	12"



**PASSENGER CAR EXTENSIONS**

- Provides a seal against contaminants while extending the valve mouth for convenient access

ASCOT NO.	MFG. NO.	FINISH	EFF. LENGTH
468-00686	686-P	Nylon	.75"
468-00687	687-P	Nylon	1.00"
468-00688	688-P	Nylon	1.25"
468-62410	6241-B	Ni-Plated Brass	.50"
468-62411	6241-M	Ni-Plated Brass	.75"
468-62412	6241-J	Ni-Plated Brass	1.25"
468-62413	6241-G	Ni-Plated Brass	1.50"



468-00685



468-62411



**DILL TRUCK VALVE EXTENSIONS**

- Extensions screw onto the standard .305" valve cap threads of the valve stem and make valve mouth accessible for air service • Available in various lengths

ASCOT NO.	MFG. NO.	EFFECTIVE LENGTH
<b>STRAIGHT METAL EXTENSIONS</b>		
468-00330	330	4-1/8"
468-00331	331	3-1/8"
468-00341	341	4-7/16"
468-00346	346	1"
468-00347	347	3-1/16"
468-00348	348	5-1/16"
468-00349	349	6-1/16"
468-00350	350	2-7/32"
468-00356	356	1-13/32"



468-00347

ASCOT NO.	MFG. NO.	BEND ANGLE	EFFECTIVE LENGTH
<b>BENT METAL EXTENSIONS</b>			
468-08028	8028	45°	1-3/8"

**DILL LIGHTWEIGHT TRUCK VALVE EXTENSIONS**

- Made from nickel plated brass • Provide the additional length necessary to inflate, deflate or gauge tires with valves hidden by decorative wheel covers • Lightweight

ASCOT NO.	MFG. NO.	COLLAR TYPE	EFF. LENGTH
468-01032	1032	Short 3/8"	2"
468-01033	1033	Short 3/8"	2.93"
468-01034	1034	Short 3/8"	3.93"
468-01035	1035	Short 3/8"	5.12"
468-01037	1037	Long 1"	2.93"
468-01038	1038	Long 1"	5.12"
468-01039	1039	Long 1"	6"



468-01038

468-01039

VALVE HARDWARE



## Valve Caps, Cores & Extensions (cont.)

### VALVE ACCESSORIES

ASCOT NO.	TR. NO.	FITS THREAD	FOR USES ON
<b>HEX NUTS</b>			
468-10013	HN-13	.406"-28	TR570 Series
468-10004	HN-4	.406"-28	TR416
468-10117	HN-17	.406"-28	TR509, 510
468-00808	RW-8	.406"-28	TV500 & TV570 Series
<b>GROMMETS</b>			
468-10015	RG-15	.625"	TR570 Series
468-11700	G-170S	.625"	Heat Resistant for TV570
468-10046	RG-46	.625"	TR509, 510
468-10039	RG-39	.625"	TR416
468-10054	RG-54	.453"	TR416
<b>O-RING</b>			
468-10060	RG-60	.328"	TR540 Series



468-10015



468-10046



468-10060

### DUAL WHEEL FLEXIBLE VALVE EXTENSIONS

- Provide easy access to the inner dual tire found on campers, recreational vehicles and light trucks • Fit standard valve cap threads
- Come with clamp to secure extension to wheel cutout • 2 extensions per pack and available in steel braided hose



468-30007

468-40007

ASCOT NO.	MFG. NO.	DESCRIPTION	EFF. LENGTH
468-30007	FE-300-7	Flexible Extension	7"
468-30010	FE-300-9	Flexible Extension	9"
468-40007	SFE-400-7	Steel Braided Extension	7"
468-40010	SFE-400-10	Steel Braided Extension	10"
468-90597	9059-7	Reinforced Rubber Hose	7"
468-90599	9059-9	Reinforced Rubber Hose	9"
468-95911	9059-11	Reinforced Rubber Hose	11"

### HALTEC ALUMINUM EXTENSIONS

- Extremely lightweight
- Made from aluminum



ASCOT NO.	MFG. NO.	COLLAR TYPE	EFF. LENGTH
468-01390	HE-390A	Long	2"
468-01391	HE-391A	Long	2-15/16"
468-01392	HE-392A	Long	5-1/8"
468-01393	HE-393A	Long	6"



468-01390

### HALTEC TRUCK VALVE EXTENSIONS

- **HE-370 SERIES:** Lightweight Extensions have the short collar for use on tube-type valves or tubeless lightweight valves. Has a double seal feature to assure positive seal
- **HE-390 SERIES:** Lightweight Extensions are the same as the HE-370 series except with a long collar
- **HE-380 SERIES:** Standard Style Extensions screw on the standard valve stem (.305"-32" cap thread) and make valve mouth accessible
- Extensions & stabilizers available for Alcoa wheels

ASCOT NO.	MFG. NO.	COLLAR TYPE	EFF. LENGTH
468-00370	HE-370	Short 3/8"	2"
468-00371	HE-371	Short 3/8"	2-15/16"
468-00372	HE-372	Short 3/8"	3-15/16"
468-00373	HE-373	Short 3/8"	5-1/8"
468-00389	HE-389	Long 1"	1-1/16"
468-00390	HE-390	Long 1"	2"
468-00391	HE-391	Long 1"	2-15/16"
468-00392	HE-392	Long 1"	5-1/8"
468-00393	HE-393	Long 1"	6"
468-00394	HE-394	Long 1"	8"
468-00395	HE-395	Long 1"	10"
468-00396	HE-396	Long 1"	12"
468-00397	HE-397	Long 1"	14"
<b>STANDARD STYLE</b>			
468-00381	HE-381	Long 1"	3-1/16"
468-00382	HE-382	Long 1"	5-1/16"
468-00383	HE-383	Long 1"	6-1/16"

468-00370



468-00390



468-00382

### BLACK POLYMER VALVE EXTENSIONS

- Light-weight truck extensions are made of a durable, tough plastic able to withstand the conditions tire valve extensions are exposed to
- They are designed for use where vibration and weight is a concern for valve stem breakage

ASCOT NO.	MFG. NO.	CAP	EFF. LENGTH
468-13500	HE-350	VC-3	2.04"
468-13501	HE-350D	DS-1	2.63"
468-13510	HE-351	VC-3	3.82"
468-13511	HE-351D	DS-1	4.41"
468-13520	HE-352	VC-3	5.21"
468-13521	HE-352D	DS-1	5.80"
468-13530	HE-353	VC-3	5.94"
468-13531	HE-353D	DS-1	6.53"



468-13530

468-13531

# Special Application Products

## HIGH-PRESSURE INFLATING CONNECTIONS

• Connections attach securely by hand or wrench to the valve cap threads of high-pressure valves



468-00556      486-06116

ASCOT NO.	MFG. NO.	DESCRIPTION
468-00556	H-556	Fits .305"-32" Thread Size With 1/8" NPT Male Connection. Has Core Depressor Pin, Copper Sealing Washer. <b>MAX. WORKING PRESSURE: 3000 PSI</b>
468-06116	H-6116B	Fits .305"-32" Thread Size With 1/8" NPT Female Connection With 70° Bend. Equipped With Hard Fiber Sealing Washer. <b>MAX. WORKING PRESSURE: 3000 PSI</b>

## HIGH-PRESSURE SHOCK/STRUT VALVES

• Constructed of stainless steel bodies for use in high pressure shock absorber units, hydraulic pressure accumulator, surge cylinders and high pressure pneumatic systems  
 • 1/2"-20 U.N.F. - 3A threads for connection to container



468-07607      468-04361      468-00798

ASCOT NO.	MFG. NO.	OPERATING PRESSURE	CONFORMS TO
468-07607	H-7607	2000 PSI	AN-812-1
468-04361	H-4361	3000 PSI	AN-6287-1
468-00798	H-798	5000 PSI	MS-28889-2

## TANK VALVES

• Use on pressure containers where gauging or service may be required • Used with various gases, fluids and operating pressures



468-00399      468-00400      468-00401      468-00402

ASCOT NO.	MFG. NO.	OAL	BASE THREAD	CAP THREAD	HEX SIZE
468-00399	TV-399	1-5/16"	1/8" NPT	.305"-32	7/16"
468-00400	TV-400	1-5/16"	1/4" NPT	.305"-32	9/16"
468-00401	TV-401	27/32"	1/8" NPT	.305"-32	7/16"
468-00402	TV-402	1-5/16"	1/8" NPT	.305"-32	7/16"



## CROSSFIRE DUAL™ TIRE PRESSURE EQUALIZATION SYSTEM

HOW CROSSFIRE WORKS: Crossfire is a pressure equalizing and monitoring valve that is mounted between dual tires. It bolts easily to the lug, hub cap, or drive axle end. Properly mounted, air freely flows from one tire to the other, maintaining equal tire pressure and load distribution.

• **Maximizes tire life** • Decreases rolling resistance for increased fuel mileage • Cuts maintenance time due to single-point inflation and the visual pressure gauge • Improves stability, braking and overall safety • Installs in minutes and requires little maintenance • Pays for itself in less than a year • **American-made and guaranteed for two years**



Under-inflation 20% under-inflation can cause a minimum 30% loss of tire life expectancy



Over-inflation 20% over-inflation can cause a minimum 10% loss of tire life expectancy



Proper-inflation Mounted correctly, Crossfire's yellow indicator verifies that air is flowing freely from one tire to the other, equalizing the load

MFG. NO.	DESCRIPTION
CF-PSI-RH	Crossfire Rubber Hoses
CF-PSI-HD	Crossfire Heavy Duty Hoses
CF-PSI-ST	Crossfire Stainless Steel Hoses
SS-PSI-RH	Super Single Rubber Hoses
SS-PSI-ST	Super Single Steel Hoses

Crossfire valves are available for desired air pressures of 50 to 150 PSI in 5 PSI increments.

Example: **CF-100-ST** = Crossfire valve, 100 PSI air pressure, stainless steel hose with AT & BH brackets.

VALVE HARDWARE



# Air/Liquid/Agricultural Valves

## AIR/LIQUID VALVES FOR TRACTOR AND ROAD GRADER SERVICE



464-00618

ASCOT NO.	MFG NO.	A	B	BEND ANGLE	VALVE HOLE
464-00618*	TV-618A*	1-7/8"	—	—	.625"
464-01618	TV-618B	1-1/2"	—	—	.625"
464-00718	TV-618RB	1-7/8"	—	—	.625" Rubber
464-00621	TV-621A	1-1/2"	3"	65°	.625"
464-00622	TV-622A	1-3/4"	4-1/2"	90°	.625"
464-00623	TV-623A	1-1/2"	2-1/4"	65°	.625"
464-00619	TV-619A	1-7/8"	—	—	.812"
464-02618	TV-618A-SS	1-7/8"	—	—	.625"

\*TR618A Made in USA available from Dill

## RIM NUTS AND BUSHINGS



468-00010



468-00009



468-00006

ASCOT NO.	MFG. NO.	DESCRIPTION
468-00202	RN-02	Rim Hole Reducer
468-00010	LN-10	Plastic Rim Nut. For Tractor Tube Valves TR-218A, TR-220A
468-00009	B-9A	Bushing Assembly. Fits Over TR-218A, TR-220A Valves For Use In 13/16" Valve Hole. Includes B9 Bushing and LN-13 Nut
468-00006	B-6	Bushing. Fits Over TR-13 Tube Valve When Used in 5/8" Valve Hole

## TRACTOR AND GRADER TUBE VALVE

- Valve assemblies with removable core housing for liquid fill
- Vulc-on back to allow field repair



467-00218

ASCOT NO.	TR NO.	BASE DIAM.	CORE HOUSING	VERTICAL HEIGHT	VALVE HOLE
467-00218	TR-218A	2-1/2"	TV-CH-3	1-7/8"	.625"
467-00220	TR-220A	2-1/2"	TV-CH-3	2-15/16"	.625"
467-00916	TR--916A	3-1/4"	R-372	1-7/8"	.812"

## RIM HOLE PLUGS



464-00015



464-01025



464-00030

ASCOT NO.	MFG. NO.	DESCRIPTION
464-00015	P-15	For Tube-Type Wheels. Used to Plug 5/8" Rim Hole and Avoid Tube Pouching
464-01025	N-1012S	Used to Seal 5/8" Rim Hole When Relocating Valve
464-00030	T-30	Used to Seal 13/16" Rim Hole When Relocating Valve

## AIR/LIQUID EXTENSION

- Use with tractor or grader valve stems
- 90° angle for more accessible valve



464-05905



ASCOT NO.	MFG. NO.	DESCRIPTION
464-05905	TV-5905	Air/Liquid Extension

## CORE HOUSINGS



468-00201



468-00203



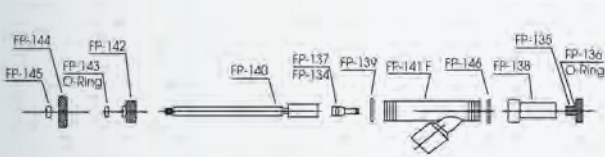
468-00216

ASCOT NO.	MFG. NO.	DESCRIPTION
468-00201	TV-CH-1	Fits Old Style TR-218, TR220 Valves
468-00203	TV-CH-3	Fits All Fast Flow Air-Liquid Valves Except Super Large Bore
468-00216	TR-CH-16	Fits SP816 Tube Spud and T-81, C-100



### VALVE ADAPTER GUN

• 1/2" female pipe thread and attaches to any calcium tire filling pump • Extracts valve core from standard bore valve or core housing from tractor valve • Securely holds valve core or core housing up in the gun body during tire filling or evacuation of liquid from a tire



SECURE HOLD

EXTRACTS VALVE CORE



464-00310

ASCOT NO.	MFG. NO.	DESCRIPTION
464-00310	310	Valve Adapter Gun
464-00134	FP-134	Large Bore Core Remover
464-00135	FP-135	Adapter For Standard Valve
464-00136	FP-136	O-Ring For FP-135 Adapter
464-00137	FP-137	Standard Valve Core Remover
464-00138	FP-138	Ejector Union
464-00139	FP-139	Gasket
464-00140	FP-140	Stem
464-00141	FP-141F	Adapter Body
464-00142	FP-142	Stem Sealing Nut
464-00143	FP-143	O-Ring For FP-142
464-00144	FP-144	Hand Wheel
464-00145	FP-145	Lock Nut
464-00146	FP-146	Teflon Gasket

### LIQUID FILL TOOLS



464-01091



464-01451



464-10912



464-01452



464-10913

ASCOT NO.	MFG. NO.	DESCRIPTION
464-01091	N-1091	Water Adapter For Liquid Fill Tires
464-10912	N-1091-2	For Water Adapter
464-10913	N-1091-3	For Water Adapter
464-01451	N-1451	1/2" FNPT Coupler for Fluid Use
464-01452	N-1452	1/2" MNPT Nipple for Fluid Use

### AQUA QUICK FILL

• To fill a tractor tire or off-the-road tire with liquid without supervision • Automatically vents excess pressure through side port while tire is filled • Indicates tire is filled by water escaping through vent hole

VENTS EXCESS PRESSURE



464-10001

ASCOT NO.	MFG. NO.	DESCRIPTION
464-10001	AQF-1	Aqua Quick Fill

VALVE HARDWARE



# Large Bore Valves

## SINGLE BEND SWIVEL VALVES



465-00431



465-00702



465-00710

ASCOT NO.	MFG. NO.	DESCRIPTION
465-00431	K-431	<b>Clamp-In Type Spud.</b> Grommet increases The Sealing Area. Can Be Removed and Replaced Without Dismounting The Tire. Do Not Use In Continuous Service. Temporary Use Only
465-00702	H-41	<b>TR-SP-2 Tubeless Spud.</b> Fits 13/16" Rim Hole Used With All Large Bore Swivel Valves
465-00710	C-10	<b>TR-C-10 Large Bore Screw-In Spud.</b> Screws Into 1/2" NPT Tapped Hole In The Rim. Can Be Replaced Without Dismounting Tire

## DOUBLE AND TRIPLE BEND SWIVEL VALVES

- These valve stems can be used with any of the spuds above
- Any other lengths can be ordered • All valves equipped with core and hex cap • On lengths over 6", 2 lock nuts are furnished



Double Bend Swivel Valve



Triple Bend Swivel Valve

ASCOT NO.	MFG. NO.	TR NO.	BEND ANGLE	LENGTH	HEIGHT
<b>DOUBLE BEND SWIVEL VALVES</b>					
465-00661	WH-70-J661	J-661	82°-8°	4-1/2"	1-5/64"
465-70255	WH-70-J661-10-1/2	-	82°-8°	10-1/2"	1-5/64"
465-70285	WH-70-J661-25-1/2	-	82°-8°	25-1/2"	1-5/64"
465-70280	WH-70-J661-28	-	82°-8°	28"	1-5/64"
465-00664	WH-70-J664	J-664	90°-13°	8-3/4"	1-5/64"
465-70125	WH-70-J664-12-1/2	-	90°-13°	12-1/2"	1-5/64"
465-00667	WH-70-J667	J-667	90°-11°	7-1/2"	1-5/64"
465-71090	WH-71-J-9	-	55°-35°	9"	1-33/64"
465-72212	WH-72-J-21-1/4	-	70°-20°	21-1/4"	1-5/64"
465-72280	WH-72-J-28	-	70°-20°	28"	1-5/64"
465-73212	WH-73-J-21-1/4	-	60°-30°	21-1/4"	1-3/8"
<b>TRIPLE BEND SWIVEL VALVES</b>					
465-00662	WH-75-J662	J-662	90°-20°-20°	14"	1-5/64"
465-75610	WH-75-J662-10-1/2	-	90°-20°-20°	10-1/2"	1-5/64"
465-00663	WH-75-J663	J-663	90°-8°-8°	25"	1-5/64"
465-00665	WH-75-J665	J-665	90°-13°-13°	32"	1-5/64"
465-00666	WH-75-J666	J-666	84°-6°-31°-31°	20-1/8"	1-5/64"

## SINGLE BEND SWIVEL VALVES

- Any other lengths may be ordered • All valves equipped with core and hex cap • On lengths over 6", 2 lock nuts are furnished • Large bore swivel valves can be used with any of the spuds on this page



465-00650

ASCOT NO.	MFG. NO.	TR NO.	BEND ANGLE	LENGTH	HEIGHT
465-01418	N-1418	-	74°	1-3/4"	1-5/64"
465-00650	WH-300-J-650	J-650	80°	3-1/8"	1-5/64"
465-00653	WH-300-J-653	J-653	80°	2-1/2"	1-5/64"
465-00657	WH-300-J-657	J-657	80°	4"	1-5/64"
465-30045	WH-300-4-1/2	-	80°	4-1/2"	1-5/64"
465-00658	WH-300-J-658	J-658	80°	5-1/2"	1-5/64"
465-03009	WH-300-9	-	80°	9"	1-5/64"
465-00446	WH-44-6	-	Strt.	6"	1-5/64"
465-40001	WH-45-2-1/2	J-4000-2-1/2	90°	2-1/2"	1-5/64"
465-00454	WH-45-4	-	90°	4"	1-5/64"
465-40002	WH-45-4-1/2	J-4000-4-1/2	90°	4-1/2"	1-5/64"
465-00455	WH-45-5	-	90°	5"	1-5/64"
465-40003	WH-45-6	J-4000-6	90°	6"	1-5/64"
465-40004	WH-45-7-1/2	J-4000-7-1/2	90°	7-1/2"	1-5/64"
465-00458	WH-45-8	-	90°	8"	1-5/64"
465-40005	WH-45-9	J-4000-9	90°	9"	1-5/64"
465-04510	WH-45-10	-	90°	10"	1-5/64"
465-45105	WH-45-10-1/2	-	90°	10-1/2"	1-5/64"
465-04512	WH-45-12	-	90°	12"	1-5/64"
465-04513	WH-45-13	-	90°	13"	1-5/64"
465-04524	WH-45-24	-	90°	24"	1-5/64"
465-40006	WH-45-28	J-4000-28	90°	28"	1-5/64"
465-40007	WH-45-29-1/2	J-4000-29-1/2	90°	29-1/2"	1-5/64"
465-04530	WH-45-30	-	90°	30"	1-5/64"
465-04532	WH-45-32	-	90°	32"	1-5/64"
465-04536	WH-45-36	-	90°	36"	1-5/64"
465-00651	WH-46-J-651	J-651	90°	4-11/16"	1-17/64"
465-04645	WH-46-4-1/2	-	90°	4-1/2"	1-17/64"
465-00652	WH-47-J-652	J-652	86°	5-1/2"	1-5/64"
465-04745	WH-47-4-1/2	-	86°	4-1/2"	1-5/64"
465-00479	WH-47-9	-	86°	9"	1-5/64"
465-00655	WH-48-J-655	J-655	74°	3-1/8"	1-5/64"
465-00654	WH-49-J-654	J-654	60°	3-1/8"	1-5/64"
465-00659	WH-50-J-659	J-659	90°	3-1/2"	1-57/64"
465-00660	WH-50-J-660	J-660	90°	8-3/4"	1-57/64"
465-00506	WH-50-6	-	90°	6"	1-57/64"
465-00507	WH-50-7-1/2	-	90°	7-1/2"	1-57/64"
465-00668	WH-51-J-668	J-668	90°	4-11/16"	5-1/8"
465-00522	WH-52-2	-	25°	2"	1-5/64"
465-00535	WH-53-5-1/2	-	80°	5-1/2"	1-21/64"
465-00546	WH-54-6	-	90°	6"	2-25/64"
465-00552	WH-55-2-1/2	-	90°	2-1/2"	2-25/64"
465-00558	WH-55-8-1/2	-	90°	8-1/2"	2-25/64"
465-00563	WH-56-3	-	65°	3"	1-5/64"
465-00573	WH-57-3	-	80°	3"	1-5/64"
465-00582	WH-58-2-1/2	-	60°	2-1/2"	2-1/8"
465-00656	WH-59-J-656	J-656	90°	3-11/16"	2-5/8"





SPECIAL HYDROFLATING VALVES

- For faster filling of tires with liquid • Does not contain valve core
- Straight-through 5/16" opening sealed with special O-ring cap, No. A-151
- Used on loader tire in conjunction with similar large bore air valve

AIR WATER VALVES

- Used in conjunction with WH-330-J-694 large bore valve



ASCOT NO.	MFG. NO.	TR. NO.	ANGLE BEND	HORIZONTAL LENGTH	CAP
465-00994	WH-JF-994	JF-994	28°	3.5" (88.9mm)	A-151

TURRET VALVE FOR PLANETARY GEAR WHEELS



ASCOT NO.	MFG. NO.	TR. NO.	ANGLE BEND	OFFSET INCHES	LENGTH
465-00690	WH-330-J-690	J-690	2 Bends	9/16"	4-11/16"
465-00691	WH-330-J-691	J-691	18°	-	3-5/16"
465-06911	WH-330-J-691B	J-691	18°	-	8-1/2"
465-00692	WH-330-J-692	J-692	28°	9/16"	4-11/16"
465-00693	WH-330-J-693	J-693	60°	1"	5"
465-00694	WH-330-J-694	J-694	28°	-	3-1/2"
465-00695	WH-330-J-695	J-695	50°	1"	4-1/8"
465-00696	WH-330-J-696	J-696	42°	29/32"	4-1/4"

LARGE RADIUS, HIGH-BEND AIR-VALVE USED WITH 9775

- All valves fit 13/16" valve hole • INCLUDES: A-145 valve core and A-149 cap



ASCOT NO.	MFG. NO.	BEND	LENGTH	HEIGHT
465-11455	114S-5-1/2	90°	5-1/2" (139.7mm)	2" (50.8mm)
465-11411	114S-11	90°	11" (279.4mm)	2" (50.8mm)

LARGE RADIUS, HIGH-BEND AIR/LIQUID VALVE

- Uses super large bore T-81 spud (TR-SP-8) • Uses A-151 cap



ASCOT NO.	MFG. NO.	BEND	LENGTH	HEIGHT
465-97755	977S-5-1/2	90°	5-1/2" (139.7mm)	2" (50.8mm)
465-97711	977S-11	90°	11" (279.4mm)	2" (50.8mm)

VALVE ADAPTERS



ASCOT NO.	MFG. NO.	DESCRIPTION
468-00100	AD-1	Adapts Large Bore Valve Down To Standard Valve Bore. Fits .305-32" Valve Core Threads
468-08007	8807N-4	Adapts Large Bore Valve Down To Standard Valve Bore. Fits .485-26" Valve Cap Threads

LARGE BORE CAPS AND CORES



ASCOT NO.	MFG. NO.	DESCRIPTION
465-00145	A-145	Large Bore Core (Short). Fits 305-32" Threads
465-00144	A-144	Large Bore Core (Long). Fits .305-32" Threads
465-00148	A-148	Screwdriver Valve Cap. Fits .482-26" Threads
465-00149	A-149	Hex Valve Cap. Fits .482-26" Threads
468-00151	A-151	Air-Water Valve Cap (TR-FC-1). O-Ring Sealing Cap. Used With 465-00994, 465-97755, 465-97711

VALVE HARDWARE

## Large Bore Valves (cont.)

### MISCELLANEOUS VALVES



465-00670



465-00671



465-00702



465-06702

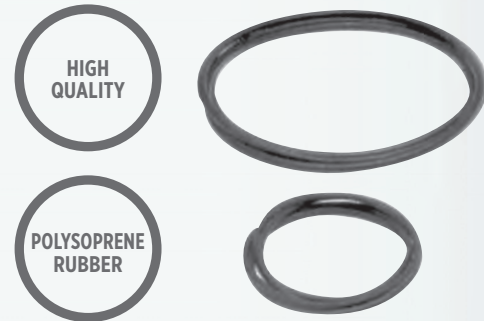


465-06703

ASCOT NO.	MFG. NO.	TR NUMBER	DESCRIPTION
465-00670	T-670	—	Loader Tire Valve. Complete With Core, Hex Cap & O-Ring Seal. Thread Size: 1-1/16-12. Height: 1-25/32"
465-00671	H-47	TR-J-671	Tank Valve. Screw-In Type With 1/4" Male Pipe Thread. Complete With Core and Cap. 1-19/32" Length
465-00702	H-41	SP-2	Tubeless Spud. Used With All Large Bore Swivel Valves. Fits 13/16" Rim Hole
465-06702	H-42	TR-J-670-2	Straight Valve. Equipped With Core and Hex Cap. Height Is 1-1/2"
465-06703	H-45	TR-J-670-3	Spud and Valve Complete. Consists Of H-41 & H-42. Height Is 1-5/8"

### STANDARD O-RINGS FOR TUBELESS RIMS

- Made of high quality polysoprene rubber • Packaged 2 per poly bag, 24 O-rings per case • Manufactured to major OEM specifications
- Arctic style O-ring available (Marked with green ink)



ASCOT NO.	MFG. NO.	ROD DIAM.	SIZE
471-80001	OR-20-JM	0.26"	Hwy (JM Rim) 20"
471-80002	OR-22-JM	0.26"	Hwy (JM Rim) 22"
471-80003	OR-24-JM	0.26"	Hwy (JM Rim) 24"
471-80004	OR-21-T	0.26"	Hwy 21"
471-80005	OR-217-L	0.28"	Grader 17"
471-80006	OR-220-TG	0.26"	Grader 20"
471-80007	OR-224-TG	0.26"	Grader 24"
471-80008	OR-25-T	0.26"	EM 25"
471-80009	OR-321-T	0.385"	EM 21"
471-80010	OR-325-T	0.385"	EM 25"
471-80011	OR-329-T	0.385"	EM 29"
471-80012	OR-333-T	0.385"	EM 33"
471-80014	OR-335-T	0.385"	EM 35"
471-80015	OR-339-T	0.385"	EM 39"
471-80016	OR-343-T	0.385"	EM 43"
471-80017	OR-345-T	0.385"	EM 45"
471-80018	OR-349-T	0.385"	EM 49"
471-80019	OR-351-T	0.385"	EM 51"
471-80020	OR-357-T	0.385"	EM 57"
471-80021	OR-451-T	0.50"	EM 51"
471-80022	OR-457-T	0.50"	EM 57"
471-80023	OR-463T	0.50"	EM 63"
471-80024	OR-232-T	0.26"	EM 32"
471-80025	OR-239-T	0.26"	EM 39"
471-80215	OR-215-H	0.28"	Grader 15"
471-80225	OR-225-T	0.26"	Grader 25"
471-80449	OR-449-T	0.50"	EM 49"
471-80451	OR-451-OVM	0.50"	OVM 51"
471-80457	OR-457-OVM	0.50"	Titan OVM 57"
471-80463	OR-463-OVM	0.50"	OVM 63"
471-80469	OR-469T	0.50"	EM 69"



### L-RINGS FOR EARTHMOVERS

• **Creates an air seal where the tire bead and rim seat are not completely compatible** • Not a cure for damaged beads nor damaged wheels and rims! • **CAUTION:** Should be used during fitments, do not install where a broken bead is suspected

ASCOT NO.	MFG. NO.	SIZE
471-80112	LR-12	12"
471-80115	LR-15	15"
471-80116	LR-16	16"
471-80120	LR-20	20"
471-80125	LR-25	25"
471-80129	LR-29	29"
471-80133	LR-33	33"
471-80135	LR-35	35"
471-80139	LR-39	39"
471-80145	LR-45	45"
471-80149	LR-49	49"
471-80151	LR-51	51"
471-80157	LR-57	57"
471-80163	LR-63	63"
471-80169	LR-69	69"



### LARGE BORE SCREW-ON REPAIR VALVES FOR INNER TUBES

• **Supplied in straight or bent form ready for installation on tubes** • Equipped with A-146 valve coer and A-149 hex cap  
• Used with SP-1000 tube spud



465-10781

ASCOT NO.	MFG. NO.	TR NUMBER	A-ANGLE BEND	B-VERTICAL HEIGHT	C-HORIZONTAL LENGTH
465-01014	LB-216	J-1014	Straight	1-29/32"	-
465-10760	LB-217	J-1076A	Straight	4-5/32"	-
465-10761	LB-218	J-1076B	86°	1-1/8"	3-1/4"
465-10762	LB-219	J-1076C	90°	1-1/2"	2-7/8"
465-10763	LB-220	J-1076D	90°	2-1/16"	2-5/16"
465-10764	LB-221	J-1076E	88°	1-3/8"	3"
465-11750	LB-223	J-1175A	Straight	5-9/32"	-
465-11751	LB-224	J-1175B	82°	1-1/4"	4-1/4"
465-11752	LB-225	J-1175C	88°	1-3/8"	4-1/8"
465-10780	LB-226	J-1078A	Straight	5-25/32"	-
465-10781	LB-227	J-1078B	82°	1-3/8"	4-5/8"
465-10782	LB-228	J-1078C	90°	1-1/8"	4-7/8"
465-11790	LB-229	J-1179A	Straight	6-13/32"	-
465-11791	LB-230	J-1179B	88°	1-3/8"	5-1/4"
465-11792	LB-231	J-1179C	86°	1-1/8"	5-1/2"

### LARGE BORE SCREW-ON REPAIR VALVE ADAPTERS FOR INNER TUBES



465-40000

ASCOT NO.	MFG. NO.	DESCRIPTION
465-40000	H-4000	Adapter Converts Tubes having SP-1000 Type Spud To Accept Large Bore Swivel Valves. Equipped With BW-18 Washer and Used With Rim Slots
465-40011	H-4000-1	Same As H-4000 Except Without Bridge Washer and Hex Nut

### CLAMP-IN RIM SPUD

• **Fits 13/16" diameter valve hole** • Can attach to any super large bore valve to the rim through a standard valve hole (13/16" diameter)



464-00208

ASCOT NO.	MFG. NO.	TR NUMBER	DESCRIPTION
464-00208	T-81	TR-SP8	Clamp-In Rim Spud
464-00082	T-82	-	T-82 Clamp-In Rim Spud - 1/4" longer effective length

### SCREW-IN RIM SPUDS

• **Used to attach any of the super large bore valves to the rim and is designed to screw into a 1/2" NPT tapped rim hole** • Can be changed without dismounting the tire



464-00209

ASCOT NO.	MFG. NO.	DESCRIPTION
464-00209	C-100	Effective Length 1/4" Longer

### SCREW-IN RIM SPUDS

• 85° bend angle



466-00850

466-00851

ASCOT NO.	MFG. NO.	DESCRIPTION
466-00850	S-85	Fits 1/2" NPT Tapped Rim Hole
466-00851	S-85-D	Furnished With A Locking Nut With A Teflon Seal So Direction Can Be Reversed

### CORE HOUSING

• **Complete with core and cap** • Designated at Tire and Rim as the CH-8 • Integral part of the system as the CH-8 is removed from the valve assembly with the IN-80A adapter to utilize the larger opening and the fullest flow of the 6185 check valve



466-00918

ASCOT NO.	MFG. NO.	TR NO.	DESCRIPTION
466-00918	R-520	TR-CH-8	Core Housing

## Large Bore Valves (cont.)

### CHECK VALVE

• **Complete with cap** • Permits rapid inflation and deflation • Eliminates need for core housing and inflation adapter • Used with 6190 air chuck

ASCOT NO.	MFG. NO.	TR NO.	DESCRIPTION
466-00860	6185	TR-L-860	Check Valve



466-00860

### QUICK CONNECTION INFLATION CHUCK

• **Designed specifically for use with 6185 check valve** • Sliding sleeve locks air chuck onto check valve and permits unrestricted air flow • Gauging can be done through valve on chuck • Positive air line shut off-valve must be installed in back of air chuck



466-06190

ASCOT NO.	MFG. NO.	DESCRIPTION
466-06190	6190	Quick Connection Inflation Chuck

### SWIVEL ANGLE CONNECTORS

• **Component two of the super large bore system is generally a swivel connector that screws onto the spud** • Connectors of various angles and lengths are available • Other end of the connector accommodates a MT-3000 flexible extension which attaches to the R-520 core housing of the 6185 check valve



466-00525



466-00675

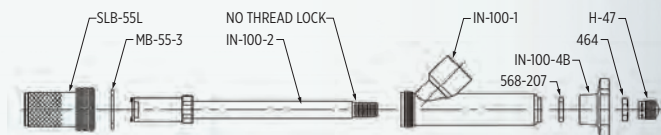
ASCOT NO.	MFG. NO.	BEND ANGLE
466-00525	R-525	90°
466-00685	R-685	85°
466-00625	R-625	80°
466-00675	R-675	75°
466-00660	R-660	60°
466-00529	R-529-5-1/4	90°

### SUPER LARGE BORE INFLATOR ADAPTER

• **New, safer alternative to IN-80A** • Left hand threads on union body — will not come loose when screwing on to valve • New non-removable stem guide • 3/4" pipe thread for easy air hose connection • During inflation, air pressure in the tire can be checked through the stem knob with a tire pressure gauge • Will insert or extract CH-8 or CH-9 core housing • Pressure can be checked without disconnecting with a Large Bore Gauge • 1-piece stainless steel stem and collet • **Reduces inflation time 60%, deflation time 80%** • The core housing is held in a stainless steel extractor by a snap ring • Extractor is rugged enough so that the core housing can be loosened or tightened without being damaged • **THE IN-100 INFLATOR ADAPTER SAVES TIME BY FAST INFLATION OR DEFLATION ON A TIRE:** After removing the valve cap, the inflator is screwed onto the valve stem. The inflator stem is pushed in to engage the flats on the core housing. By rotating the stem counter clockwise, the core housing can be removed without any danger to the person removing it. The core housing is pulled up into the inflator body and held there during inflation or deflation. Can also be used for liquid-filling tires equipped with Super Large Bore valves.



466-05311



#### PARTS LIST:

<b>SLB-55L</b>	Ejector Union	<b>E-3100-10</b>	Stem Sealing Nut
<b>MB-55-3</b>	Gasket for G-201	<b>568-207</b>	O-Ring for G-207
<b>IN-100-1</b>	Adapter Body	<b>IN-100-4B</b>	Hand Knob
<b>IN-100-2</b>	Stem and Collet	<b>464</b>	Lock Nut
<b>G-206</b>	Gasket for Stem Nut	<b>A-147</b>	Dome Cap

#### IN-100A PARTS LIST

E-3100-2A Connector Sleeve	E-3100-12 Hand Knob
IN-100-1A Body for IN-100	E-3100-1A Stem and Collet
IN-100-3A Nut for Connector Sleeve	464 Lock nut
10218 O-Ring	A-147
G-202 Teflon Washer	

ASCOT NO.	MFG. NO.	DESCRIPTION
466-05311	IN-100A	Super Large Bore Inflator Adapter



FLEXIBLE EXTENSION SERIES

- Flexible extensions are made up in any length to allow the extension to fit the wheel configuration
- Specially designed fittings and thermoplastic hose will not fatigue or crush during service
- Corrosion problems are eliminated
- Able to customize your extension in the field
- The R-969-K and R-969K-1 kits are available to field assemble your own flexible extensions with the T-620 assembly tool (not shown)

MADE UP IN ANY LENGTH

CORROSION PROBLEMS ELIMINATED



466-03000

ASCOT NO.	MFG. NO.	DESCRIPTION
466-03000	MT-3000	Flexible Extension

ASSEMBLY KIT FOR SUPER LARGE BORE VALVES-FIELD SERVICE



466-96901

ASCOT NO.	MFG. NO.	DESCRIPTION
466-96901	R-969K-1	Consists Of R-762S Swivel Connector, R-763 Straight Tubing Connector, R-764R (2) Tubing Connector Sleeves and B-222 Nuts (2)
466-96900	R-969-K	Consists Of The Above Plus The R-520 Core Housing Complete With Core and Cap
466-76000	R-760	Extension Tubing Available In 50' and 100' Lengths

RIGID METAL SWIVEL VALVES



466-00200



466-00800



466-00890



466-01850



Custom Valve

ASCOT NO.	MFG. NO.	DESCRIPTION
466-00200	M-2000	<b>Swivel Valve Assembly.</b> 90° Swivel Valve - 3-1/8" Horizontal Length
466-00800	MR-800	<b>Swivel Valve: MR-800-Length.</b> Rigid Metal Swivel Valve With R-520 Core Housing And 2B-222 Lock Nuts
466-00890	MR-890	<b>Turret Valve: MR-890.</b> Rigid Metal Turret Type Valve With R-520 Core Housing & (3)B-222 Lock Nuts
466-01850	MR-850	<b>Swivel Valve: MR-850.</b> Same As MR-800 Except With A T-81 Rim Spud

VALVE HARDWARE



## Large Bore Valves (cont.)

### SUPER LARGE BORE VALVES



466-00296



466-04000



466-07910

ASCOT NO.	MFG. NO.	DESCRIPTION
466-00296	DS-296	<b>Super Large Bore Double Spud Valve Assembly (with Flexible Extension).</b> Designed For Use Where Above Rim Is 7/8". Consists Of DS-210 Double Spud, DS-215 Plug And MT-4000 Flexible Extension
466-04000	MT-4000	<b>Flexible Extension.</b> Used With DS-296 And PB-210. Consists Of: DS-226 Connector, R-763 Connector, (2) R-764R Sleeves, R-760 Tubing
466-07910	S-7910	<b>Valve Support</b> For Super Large Bore
466-08860	S-8860	<b>Valve Support</b> For Large Bore

### SUPER LARGE BORE VALVES



466-01066



466-01870

ASCOT NO.	MFG. NO.	DESCRIPTION
466-01066	N-1066	<b>Super Large Bore Loader Valve.</b> Accepts R-520 Core Housing Or Other Super Large Bore Swivel Fittings. Thread Size is 1-1/16"-12. Super Large Bore Version Of T-670
466-05000	M-5000	<b>Straight Valve Assembly.</b> Screw-In Type Spud With O-Ring Seal. R-521 Core Housings Not Interchangeable In Other SLB Spuds. Thread Size Is 3/4-16"
466-01870	M-1870	<b>Straight Valve Assembly.</b> Super Large Bore Straight Valve Assembly Consists of R-520 Core Housing And T-81 Spud
466-01050	N-1050	Same as M-1870 but with T-82 Spud

### SUPER LARGE BORE AIR/LIQUID VALVES FOR TRACTOR AND GRADER

### SUPER LARGE BORE TURRET VALVES

- Long super large bore turret valve with 15° bend
- Used on Caterpillar applications



466-01538



466-01543

ASCOT NO.	MFG. NO.	DESCRIPTION
466-01533	JD-3	6-1/8" Long Super Large Bore Turret - 12° Bend Angle
466-01538	N-1538B	7-7/8" Long Super Large Bore Turret
466-01543	N-1543A	6-1/8" Long Super Large Bore Turret



464-00208



464-00216



466-50910

ASCOT NO.	MFG. NO.	DESCRIPTION
464-00208	T-81	Fits 13/16" Dia. Rim Holes
464-00216	R-372	Fits T-81, C-100, TRSP 816 Tube Spuds
466-50910	H-50	Components T-81 Spud And R-372 Core Housing



# Large Bore Extensions

## HAND BENDABLE LARGE BORE EXTENSIONS

• Equipped with 2 lock nuts and 3/4" hex sealing nut • Teflon gasket seals on end of valve; the lead seal in the sealing nut is forced into the threads for a second seal, locking extension to valve • Cap and core not included • Should be removed from valve and transferred to extension

ASCOT NO.	MFG. NO.	EFFECTIVE LENGTH
465-75035	753S-3-1/2	3-1/2"
465-75040	753S-4	4"
465-75045	753S-4-1/2	4-1/2"
465-75080	753S-8	8"
465-75090	753S-9	9"
465-75010	753S-10	10"
465-75115	753S-11-1/2	11-1/2"
465-75120	753S-12	12"
465-75135	753S-13-1/2	13-1/2"
465-75160	753S-16	16"
465-75170	753S-17	17"
465-75175	753S-17-1/2	17-1/2"
465-75180	753S-18	18"
465-75185	753S-18-1/2	18-1/2"
465-75190	753S-19	19"
465-75205	753S-20-1/2	20-1/2"
465-75210	753S-21	21"
465-75215	753S-21-1/2	21-1/2"
465-75225	753S-22-1/2	22-1/2"
465-75235	753S-23-1/2	23-1/2"
465-75245	753S-24-1/2	24-1/2"
465-75250	753S-25	25"
465-75295	753S-29-1/2	29-1/2"
465-75320	753S-32	32"



465-75035



465-81090

## FLEXIBLE LARGE BORE EXTENSIONS

• Made with tough rubber hose and reusable hydraulic type fittings • Equipped with 2 lock nuts and 3/4" hex sealing nut • A Teflon gasket seals on end of valve • The lead seal in the sealing nut is forced into the threads for a second seal, positively locking extension to valve

ASCOT NO.	MFG. NO.	EFFECTIVE LENGTH
465-81080	810F-8	8"
465-81090	810F-9	9"
465-81100	810F-10	10"
465-81200	810F-20-1/2"	20-1/2"
465-81250	810F-25	25"
465-81320	810F-32	32"
465-81400	810F-40	40"

## RIGID BRASS LARGE BORE EXTENSIONS

• All-brass extensions used when mounted in straight line with valve • Full length deflector pin opens core in valve when servicing • Equipped with hex cap, 2 lock nuts on extensions over 5" in length

ASCOT NO.	MFG. NO.	EFFECTIVE LENGTH
465-86032	867- 1-1/4	1-1/4"
465-86015	867- 1-1/2	1-1/2"
465-86020	867- 2	2"
465-86025	867- 2-1/2	2-1/2"
465-86030	867- 3	3"
465-86033	867- 3-3/8	3-3/8"
465-86040	867- 4	4"
465-86045	867- 4-1/2	4-1/2"
465-86050	867- 5	5"
465-86059	867- 5-9/16	5-9/16"
465-86060	867- 6	6"
465-86067	867- 6-7/8	6-7/8"
465-86072	867- 7-1/4	7-1/4"
465-86077	867- 7-3/4	7-3/4"
465-86080	867- 8	8"
465-86085	867- 8-1/2	8-1/2"
465-86090	867- 9	9"
465-86100	867-10	10"
465-86107	867- 10-3/4	10-3/4"
465-86120	867-12	12"
465-86125	867- 12-1/2	12-1/2"
465-86160	867- 16	16"
465-86187	867- 18-7/8	18-7/8"
465-86225	867- 22-1/2	22-1/2"
465-86245	867- 24-1/2	24-1/2"



465-86060

## CUSTOM BENT SWIVEL VALVES AND EXTENSIONS

ASCOT NO.	MFG. NO.	OVERALL LENGTH	NO. OF BENDS	TYPE
465-00570	WHG-0570VC	19-31/32"	5	Valve
465-00585	WHD-0585EC	17-15/16"	4	Extension
465-01450	WHG-1450VC	32-7/8"	5	Valve
465-04985	WHG-4985VC	19-3/4"	4	Valve
465-05008	WHD-5008EC	17-13/16"	4	Extension
465-05112	WHG-5112VC	28-3/8"	4	Valve
465-05200	WHG-5200VC	27"	5	Valve
465-05410	WHG-5410VC	31-9/16"	5	Valve
465-05420	WHG-5420VC	33"	5	Valve
465-05922	WHD-5922EC	15-1/4"	5	Extension
465-07103	WHD-7103EC	16-1/4"	4	Extension
465-07601	WHD-7601EC	16-3/4"	4	Extension
465-07602	WHD-7602EC	14-1/4"	4	Extension
465-07940	WHD-7940EC	19"	5	Extension
465-07948	WHD-7948EC	20-5/8"	4	Extension
465-07949	WHD-7949EC	28-7/8"	4	Extension
465-80818	WHG-8018VC	26-3/4"	4	Valve
465-80819	WHG-8019VC	8"	1	Valve
465-08852	WHG-8852VC	18-9/16"	4	Valve
465-09440	WHG-9440VC	27"	5	Valve
465-09470	WHG-9470VC	31-1/2"	5	Valve
465-09903	WHD-9903EC	16-7/8"	4	Extension



VALVE HARDWARE

# Z-Bore Valve System

There are three spud types available: the standard clamp-in spud, a screw-in spud and an angle screw-in spud. There is no temporary outside-in clamp-in spud for Z-Bore. The Z-Bore Valve System is very similar to the Super Large Bore System. By using an O-Ring to seal the clamp-in spud to the rim, a greater flow diameter is created without sacrificing strength or performance. Flows 370 CFM compared to 240 CFM on the Z-Bore Valve System.

## Z-1 SCREW-IN SPUD

- **The screw-in spud is used to attach any Z-Bore valves to the rim** • Designed to screw into a 1/2" NPT-tapped rim hole • Can be changed without demounting the tire

ASCOT NO.	MFG. NO.	DESCRIPTION
466-70001	Z-1	Screw-In Spud



466-70001

## Z-2 CLAMP-IN SPUD

- **Can attach any Z-Bore valve to the rim through a standard valve hole (13/16")** • Fits a 13/16" diameter valve hole • Tire must be dismounted to change spud

ASCOT NO.	MFG. NO.	DESCRIPTION
466-70002	Z-2	Clamp-In Spud



466-70002

## Z-13 SCREW-IN SPUD

- **The Z-13 screw-in spud screws into the 3/4" NPT-tapped rim hole and converts Mega Bore to Z-Bore**

ASCOT NO.	MFG. NO.	DESCRIPTION
466-70013	Z-13	Screw-In Spud



466-70013

## Z-4 ANGLE SCREW-IN SPUD

- **Fits 1/2" NPT-tapped rim hole** • 85° bend angle

ASCOT NO.	MFG. NO.	DESCRIPTION
466-70004	Z-4	Angle Screw-In Spud



466-70004

## ANGLE CONNECTOR

- **Connectors of various angles and lengths are available** • The connector accommodates a flexible extension which attaches to the Z-10 core housing

ASCOT NO.	MFG. NO.	DESCRIPTION
469-70360	Z3-60	60° Angle
466-70375	Z3-75	75° Angle
466-70380	Z3-80	80° Angle
466-70390	Z3-90	90° Angle



466-70390

## Z-BORE FLEXIBLE EXTENSIONS

- **Made up in any length to allow extension to fit the wheel configuration** • Specially designed fittings and thermoplastic hose will not fatigue or crush during service • Corrosion problems are eliminated • Able to customize extension in the field • ZFAK field assembly kit available to assemble your own

ASCOT NO.	MFG. NO.	DESCRIPTION
466-70700	ZBFE-Length	Flexible Extension
466-70701	ZFAK	<b>Assembly Kit For Z-Bore Valves. INCLUDES:</b> Contains Z-8 Swivel Connector, Z-7 Straight Tubing Connector, 2x Z2-2 Nuts, 2x Z-9 Tubing Connector Sleeves, Z-10 Core Housing. <i>Z-100 Tubing Is Ordered Separately</i>

## Z-10 CORE HOUSING

- **Complete with core and cap** • Integral part of the system as the Z-10 is removed from the valve assembly with the Haltec Z-12B inflator to utilize the larger opening and the fullest flow

ASCOT NO.	MFG. NO.	DESCRIPTION
466-70010	Z-10	Core Housing w/Core & Cap



466-70010

## Z-12L INFLATOR

- **To maximize air flow, a Z-12B inflator is used to remove core housing during inflation and deflation** • Operates like the IN-100A Super Large Bore inflator

ASCOT NO.	MFG. NO.	DESCRIPTION
466-70012	Z-12L	Inflator



466-70012





# PT Valve System

The best way to insure maximum tire life is through proper tire inflation. Using a PT valve and gauge assembly, tire pressure monitoring has never been easier. Use the proper PT gauge for daily checks and a separate master gauge for weekly checks which will prevent air loss before it can cause permanent tire damage. The PT valve and gauge can be used on most Large Bore and Super Large Bore applications.

## PT VALVES

- **Designed with trouble-free, urethane O-rings on the valve barrel** • Other valves and sizes available • Assemble the valve to the tire and wheel assembly before installing the PT gauge to the PT valve



ASCOT NO.	MFG. NO.	DESCRIPTION
465-00042	PT-H-42	H-42 With PT Grooves & O-Rings
465-00456	PT-45-6	WH-45-6 With PT Grooves & O-Rings
465-00520	PT-R-520	R-520 With PT Grooves & O-Rings For Super Large Bore
465-00524	PT-EX	Large Bore Extension w/1-5/8" Effective length to allow PT Gauge installation on existing valves
465-07536	PT-753S-6	753S-6 With PT Grooves & O-Rings
465-30060	PT-300-J-650	WH-300-J-650 With PT Grooves & O-Rings
465-33031	PT-330-3-1/2	Turret Style Valve With 3-1/2" Effective Length
465-33069	PT-330-J-690	WH-330-J-690 With PT Grooves & O-Rings

## PT GAUGES

- **Easy-to-read dial gauge attaches to the valve** • Includes gauge and nut • Calibrated 0-160 PSI • Has an all-anodized aluminum body and is totally sealed to prevent moisture from fogging the glow-in-the-dark dial



ASCOT NO.	MFG. NO.	DESCRIPTION
468-00101	PT Gauge	Digital Passenger Gauge

## PTC BLOCK-OFF COLLAR

- **For PT valves when gauge is not attached**
- Can be installed to prevent air leakage



ASCOT NO.	MFG. NO.	DESCRIPTION
468-00580	PTC	5/8" Hex

## VALVE CAP

- **Valve cap used on PT-style valves** • 5/8" hex



ASCOT NO.	MFG. NO.	DESCRIPTION
468-00150	A-150	Valve Cap

## PT VALVE TOOL

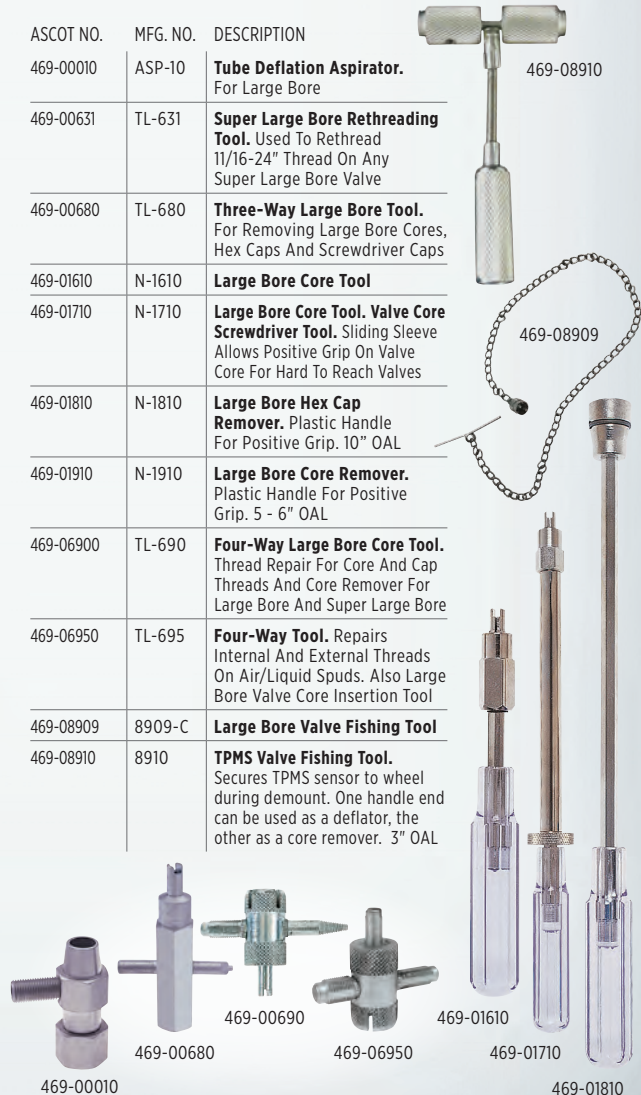
- **Tightens nut to hold PT gauge on valve assembly**
- Also tightens A-150 cap and PTC collar

ASCOT NO.	MFG. NO.	DESCRIPTION
468-00634	TL-634	PT Valve Tool



## LARGE BORE VALVE TOOLS

ASCOT NO.	MFG. NO.	DESCRIPTION
469-00010	ASP-10	<b>Tube Deflation Aspirator.</b> For Large Bore
469-00631	TL-631	<b>Super Large Bore Rethreading Tool.</b> Used To Rethread 11/16-24" Thread On Any Super Large Bore Valve
469-00680	TL-680	<b>Three-Way Large Bore Tool.</b> For Removing Large Bore Cores, Hex Caps And Screwdriver Caps
469-01610	N-1610	<b>Large Bore Core Tool</b>
469-01710	N-1710	<b>Large Bore Core Tool. Valve Core Screwdriver Tool.</b> Sliding Sleeve Allows Positive Grip On Valve Core For Hard To Reach Valves
469-01810	N-1810	<b>Large Bore Hex Cap Remover.</b> Plastic Handle For Positive Grip. 10" OAL
469-01910	N-1910	<b>Large Bore Core Remover.</b> Plastic Handle For Positive Grip. 5 - 6" OAL
469-06900	TL-690	<b>Four-Way Large Bore Core Tool.</b> Thread Repair For Core And Cap Threads And Core Remover For Large Bore And Super Large Bore
469-06950	TL-695	<b>Four-Way Tool.</b> Repairs Internal And External Threads On Air/Liquid Spuds. Also Large Bore Valve Core Insertion Tool
469-08909	8909-C	<b>Large Bore Valve Fishing Tool</b>
469-08910	8910	<b>TPMS Valve Fishing Tool.</b> Secures TPMS sensor to wheel during demount. One handle end can be used as a deflator, the other as a core remover. 3" OAL



VALVE HARDWARE

# Valve Hardware Tools

## VALVE INSERTION AND REMOVAL TOOLS



ASCOT NO.	MFG. NO.	DESCRIPTION
469-00014	VT-014	<b>Valve Installation Tool with Rubber Block</b>
469-00040	00040R	<b>Valve Stem Puller with Rubber Boot</b>
469-00992	992	<b>Tubeless Tire And Tire Valve Inserting And Removing Tool.</b> For All Sizes Of Snap-In Passenger Car Tire Valves
469-01124	VT-1124	<b>Tubeless Tire Valve Service Tool.</b> Pull-A-Stem Tool Pulls Old Valves Or Inserts New Valves. Tool Fits All Sizes Or Lengths
469-03333	VT-03P	<b>Plastic Valve Puller with Metal Rod Insert</b>

## VALVE CORE INSERTION AND REMOVAL TOOLS



ASCOT NO.	MFG. NO.	DESCRIPTION
469-00001	CT-1	<b>Pocket-Size Valve Core Remover</b>
469-00003	CT-3	<b>Heavy Duty Standard Valve Core Remover</b>
469-00005	CT-5	<b>For Both Standard and Large Bore Valves</b>
469-00607	607	Has Plastic Screwdriver Handle For Better Grip And Leverage
469-01638	1638A	<b>Heavy Duty Professional Plastic Valve Puller.</b> Steel Tube Reinforced Handle Provides Extreme Rigidity. Safety Orange Color For Easy Visibility. Protects Wheels From Damage During Installation/Removal Of Snap-In Valve Stems
469-15407	15407	<b>Angled Tubeless Tire Valve Inserting And Removing Tool</b>

## STANDARD BORE VALVE TOOLS



ASCOT NO.	MFG. NO.	DESCRIPTION
469-00612	TL-612	<b>Standard Bore Core Tool.</b> With An Overall Length Of 8" And Oversized Handle
469-00625	TL-625	<b>Standard Bore Core Tool.</b> With Recessed Probe. Fits In Pocket
469-00630	TL-630	<b>Hex Nut Driver.</b> For 500 Series Truck. For Tubeless Clamp-In Metal Valves. For All Lengths Of Tubeless Truck Valves
469-00632	TL-632	<b>Truck Extension Service Tool.</b> Tightens Both Metric European And Domestic Type Extensions. Broached To Engage The Metric Hex At The Extension Top and Will Reach The Hex On A 7" U.S.A. Type Extension
469-00633	TL-633	<b>Valve Cap Tool.</b> Easy To Remove And Install Valve. Caps On Inside Dual Wheels. For Aluminum Wheels

## SUR-LOCK VALVE TOOLS

• **Special design allows the valve core to stay attached to the tool after it is removed from the valve** • Great tool to keep the valve core from getting dropped or lost



ASCOT NO.	MFG. NO.	DESCRIPTION
469-00131	TL-131	For Bicycles
469-00132	TL-132	For Cars. 1-3/4" Length
469-00133	TL-133	For Trucks. 8-1/4" Length
469-00134	TL-134	For Large Bore Cores. 10-1/2" Length

## VALVE AND CORE TOOLS

ASCOT NO.	MFG. NO.	DESCRIPTION
469-00002	CT-2	<b>Black Heat Treated Heavy Duty Tire Valve Repair Tool.</b> 4-in-1 Standard Valve Tool Repairs Cap Threads, Repairs Core Threads. Easy-Out Feature For Removing Damaged Cores & Removing Standard Caps
469-00012	CT-2E	<b>Economy 4-Way Valve Core Tool (Black)</b>
469-00004	CT-4	<b>Economy Standard Bore 4-Way Tool</b>
469-00011	VT-11	<b>Cable Valve Fishing Tool.</b> Valve Core Wrench And Deflating Pin With Flexible Cable For Fishing Valve Through Rim Hole
469-00018	VSW18	<b>Valve Stem Ratchet.</b> For TR570 Series Valves
469-00020	VSW20	<b>Valve Stem Ratchet.</b> For TR540 Series Valves
469-00021	VT-21	<b>Double-Use Tool.</b> Removes Valve Cores. Screws On Valve Mouth To Open Core
469-00081	TVT-81	<b>Heavy Duty 4-Way Valve Core Tool</b>
469-00567	567A	<b>Core Removing Tool.</b> Screwdriver Grip. Easy Out For Removing Broken Cores
469-00609	TL-609	<b>Chain Valve Fishing Tool.</b> Guides Valve Smoothly Through Rim Hole While Mounting Tire & Tube
469-01115	VT-1115	<b>Valve Core Tool.</b> For Inserting And Removing. Valve Cores. Long Hex Body For Easy Access
469-05262	5262	<b>Tube Deflating Aspirator.</b> Screwing Aspirator Onto Valve Mouth And Applying Air Chuck To Threaded Inlet Creates Vacuum That Siphons Air From Tube
469-11115	VT-1115I	<b>Recessed Valve Core Tool.</b> Core Tool Is Recessed Into The Handle. Design Eliminates The Possibility Of The Tool Poking Through A Shirt Pocket. Easily Fits Into A Shirt Pocket. Includes Clip
469-23430	VG8	<b>Tube Deflator.</b> Removes Air Completely, Quickly After The Valve Core Is Moved. Fits On Every Type Of Standard Bore Valve
469-32850	3285D	<b>Lock-On Screwdriver Core Tool.</b> 5" Effective Length. Allows The Valve Core To Stay Attached To The Tool After It Is Removed From The Valve. Protects The Valve Core From Loss. Aluminum Handles Provide A Sturdy Grip For Inserting And Removing Valve Cores
469-32851	3285E	<b>Lock-On Screwdriver Core Tool.</b> 6.5" Effective Length. Allows The Valve Core To Stay Attached To The Tool After It Is Removed From The Valve. Protects The Valve Core From Loss. Aluminum Handles Provide A Sturdy Grip For Inserting And Removing Valve Cores
469-52000	S-2	<b>Valve Capper Inner Dual Valve Core/Cap Tool</b>
469-00673	673-D	<b>Screwdriver/Core Tool.</b> Lock-On Feature For The Valve Core. Metal Pocket Clip. Flat-Head Screwdriver Tip



469-00002



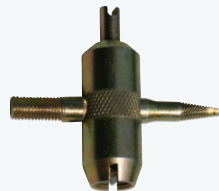
469-00012



469-00004



469-00021



469-00081



469-05262



469-23430



469-00011



469-00018



469-00020



469-00567

469-00609

469-00673



469-01115



469-11115

469-32850

469-32851

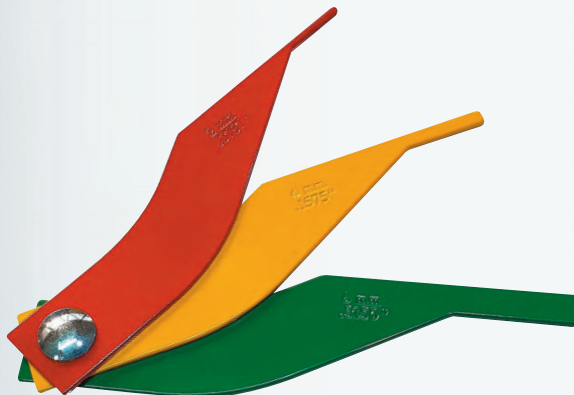


469-52000

# Tire Gauges

## BRAKE LINING THICKNESS GAUGE

• **Made of durable metal** • Each blade features both SAE and Metric measurements • Clear and accurate depth readings for a quick and easy reading • Color coded brake gauge provides effective identification • **THE SET IS DIVIDED INTO 3 COLORS: Red, Yellow and Green** • Red 2 mm (.787") Brakes must be serviced • Yellow 4 mm (.1575") Brakes must be serviced • Made in Taiwan



411-97840



411-65201

ASCOT NO.	MFG. NO.	DESCRIPTION
411-97840	BG-97840	3-Piece Brake Lining Thickness Gauge
411-65201	B650201	8-Piece Brake Lining Thickness Gauge

## TIRE TREAD DEPTH GAUGES



454-00190

454-00599

454-00712

454-01420

454-01599

454-05127

ASCOT NO.	MFG. NO.	DESCRIPTION
454-00190	HT-190L	3-Color All-Metal Tread Depth Gauge
454-00599	595	Tire Tread Depth Gauge. Used To Measure Tire Tread Depth In 1/32" Increments: 0-1"
454-00712	NS712	All Metal Tread Depth Gauge
454-01420	HT-1420	Truck Tire Depth Gauge. Calibrated In mm and 1/32nd of Inch. Measures Shoulder Wear and Tread Depth. Durable Metal Construction
454-01599	599-C	3-Color Tread Depth Gauge
454-05127	5127	Red-Yellow-Green Metal indicator bar with black numbers 0-32In 32NDS



1-2% ACCURACY

TPMS BLACK PLATED MASTER TIRE GAUGE

- **RANGE:** 10-100 PSI in 2-PSI increments
- **ACCURACY:** ± .5 PSI accuracy • Black electro-plated coating • 2-sided plastic bar • Angled chuck head
- Perfect for TPMS applications



BLACK ELECTRO-PLATED COATING

476-03501

ASCOT NO.	MFG. NO.	DESCRIPTION
476-03501	3501	Black Plated Master Tire Gauge w/ Angled Chuck - ± .5% Accuracy

AUTOMOTIVE TIRE GAUGES\*

- Pencil, chrome tire gauges with nylon indicator bars

NYLON INDICATOR BARS

ASCOT NO.	MFG. NO.	RANGE	TYPE
476-10105	GA-105	10-50 PSI	Passenger Gauge
476-10115	GA-115	20-120 PSI	High Pressure Gauge
476-10100	GA-100	1-20 PSI	Low Pressure Gauge
476-10110	GA-110M	10-50 PSI	Passenger Gauge 75-340 kPa Calibrated in PSI & kPa
476-10120	GA-120M	20-120 PSI	High Pressure Gauge 150-280 kPa Calibrated in PSI & kPa
476-10125	GA-125	5-45 PSI	Air/Liquid Gauge
476-10145	GA-145	10-75 PSI	Mid-Range Gauge 70-500 kPa Calibrated in PSI & kPa



476-10125

476-10145

\* Imprinted gauges available with your name

MASTER TEST GAUGES

- Used to check accuracy of gauges
- Calibrated 10 -160 PSI

ASCOT NO.	MFG. NO.	DESCRIPTION
476-10140	GA-140	Master Test Gauge

POCKET TRUCK GAUGES

ASCOT NO.	MFG. NO.	DESCRIPTION
476-10150	GA-150	Straight-On/Angled Gauge. 20 -120 psi. Chrome Plated
476-10160	GA-160	Straight-On/Angled Gauge. 20 -120 PSI. Black Baked Epoxy Protective Finish
476-10130	GA-130	Dual Foot Angled Pencil Gauge. 20 -120 psi

476-10160



TRUCK SERVICE GAUGES

- Wide variety of service gauges to accommodate the numerous tire and wheel configurations encountered by tire service personnel
- Available in chrome plated or protective black epoxy finish as indicated
- Calibrated from 10-150 PSI in 2-pound increments
- Nylon or metal indicator bars



ASCOT NO.	MFG. NO.	DESCRIPTION
476-10480	1048T	Dual Chuck Service Gauge, Straight-On/Angled With Metal Bar, Black Epoxy Finish
476-10135	GA-135	Angle Chuck With Nylon Bar
476-11135	GA-135S	Same As Above, Angle Chuck With Metal Bar
476-10155	GA-155	Straight-On With 30° Reverse Chuck
476-10165	GA-165	Same As Above, Straight-On With 30° Reverse Chuck, Black Epoxy Finish
476-11148	1048S	Dual Straight Service Gauge, Short Length
476-11155	GA-155S	Same As Above, Straight-On With 30° Reverse Chuck, Metal Bar
476-11048	1048-ADJ	Internal Adjustable Field Service Gauge
476-10185	GA-185	Dual Foot Service Gauge With Nylon Bar, 180° Chuck, Chrome Plated
476-11185	GA-185S	Same As Above, Dual Foot Service Gauge With Metal Bar

VALVE HARDWARE



⚠️ WARNING: For more information go to www.P65Warnings.ca.gov.

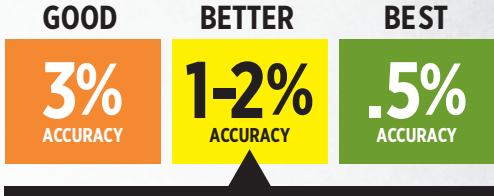
# GAUGE ACCURACY GUIDE

# Why do you need Quality Air Gauges?

Keeping an eye on tire pressure is a critical part of regular inspection and maintenance. Tire pressure is a critical function in many different ways. Underinflated (or grossly overinflated) tires don't handle safely, and if you find yourself in a "steer out of trouble" situation, improperly inflated tires can get you into a lot of trouble. Low tires heat up and can blow out, not only destroying the tire but also putting you in an accident-likely situation.

Keeping tires properly inflated also makes sense from a dollars and sense perspective: Underinflated tires wear out more quickly. Overinflated tires can make the ride rough, and actually wear out suspension parts. And yes, fuel economy is really affected by tire inflation. The solution to these safety and money issues is as simple as regularly checking tire inflation, and for this you need an accurate tire pressure gauge.

**PLEASE USE THIS GAUGE ACCURACY GUIDE AS A HELPFUL TOOL!**



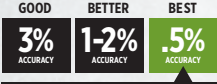
A QUICK GUIDELINE FOR OUR GAUGES IS SHOWN WITH THE PRODUCTS IN THE SECTIONS BELOW

### 0.5% ACCURACY

#### DIGITAL & PENCIL GAUGES

RECOMMENDED FOR ALL TYPES OF VEHICLES

476-03501  
10-100 PSI



477-10001  
0-174 PSI

### 1-2% ACCURACY

#### DIGITAL GAUGES

RECOMMENDED FOR ALL TYPES OF VEHICLES

477-11237  
0-175 PSI



### 1-2% ACCURACY

#### ANALOG GAUGES

RECOMMENDED FOR ALL TYPES OF VEHICLES

477-10004  
0-138 PSI



### 1-2% ACCURACY

#### BAYONET & SIGHT GLASS GAUGES

RECOMMENDED FOR ALL TYPES OF VEHICLES

477-00001  
0-150 PSI  
476-32921  
10-160 PSI



### 1-2% ACCURACY

#### TRUCK SERVICE GAUGES

RECOMMENDED FOR ALL TYPES OF VEHICLES

476-10155  
10-150 PSI



476-10480  
10-150 PSI

### 1-2% ACCURACY

#### PENCIL GAUGES

RECOMMENDED FOR ALL TYPES OF VEHICLE

476-10160  
20-120 PSI



476-10105  
10-50 PSI

DIGITAL TIRE GAUGES

• **Large, easy-to-read LCD numbers for precise readings** • Features pinpoint accuracy, convenient air bleed, protective casing • Features dual foot chuck • Reads 3 to 160 PSI

ASCOT NO.	MFG. NO.	DESCRIPTION
476-10500	DT-105	Digital Passenger Gauge
476-15038	DT150-38CV	Digital Truck Gauge

DIGITAL TREAD DEPTH GAUGE

• **Made from strong carbon fiber composite** • Zero setting in any position • Metric, decimal inch and fraction inch toggle • Large LCD display

ASCOT NO.	MFG. NO.	DESCRIPTION
454-00209	NS209S	Digital Tread Depth Gauge

DIGITAL TRUCK TIRE GAUGE

• **OPERATING RANGE:** 0-180 PSI • **ACCURACY:** +/- 1% + 0.5 PSI at 100 PSI • Auto power off, simple operation • Built-in backlight with clear, large LCD display

ASCOT NO.	MFG. NO.	DESCRIPTION
476-03238	N/A	Digital Truck Tire Gauge

DIGITAL POCKET GAUGE

• **RANGE:** 0-150 PSI in .5 PSI increments • **ACCURACY:** ±1% PSI accuracy • Large LCD display • Red backlight • Angled chuck head

ASCOT NO.	MFG. NO.	DESCRIPTION
476-32380	3238P	Digital Pocket Gauge w/ Angle Chuck - 1-150 PSI

DIAL GAUGE

• **Calibrated 0 to 160 PSI in 5 PSI units and 150 to 1100 in kPa metric scale** • 14" flexible hose • Holds pressure readout until released

ASCOT NO.	MFG. NO.	DESCRIPTION
476-00274	GA-274	Dial Gauge. 0 -160 PSI

DIAL GAUGE W/ EXTENSION HANDLE & BLEEDER VALVE

• **18" Standard & Large Bore Gauge w/Extension** • Handle & bleeder valve • Calibrated 0-160 PSI in 5 PSI increments

ASCOT NO.	MFG. NO.	DESCRIPTION
476-00276	GA-276	Dial Gauge w/ Extension Handle & Bleeder Valve - 0-160 PSI

STANDARD AND LARGE BORE AIR/LIQUID MASTER GAUGE

• **Straight-on air chuck fits both standard and large bore valves** • Calibrated to 0 to 160 PSI in 1 PSI increments and 0-1100 in kPa metric scale • Has recalibration feature and replaceable filters

ASCOT NO.	MFG. NO.	DESCRIPTION
476-00290	GA-290	Standard and Large Bore Air/Liquid Master Gauge

LARGE BORE DIAL AIR GAUGE

• **15" Large Bore Air Gauge with built-in filter and accessible reservoir for easy cleaning**

ASCOT NO.	MFG. NO.	DESCRIPTION
476-30377	GA300-377	Large Bore Dial Air Gauge

476-10500



VALVE HARDWARE

## Tire Gauges (cont.)



### DIGITAL TIRE PRESSURE GAUGE

• **OPERATING RANGE:** 4-100 psi • Automatically shuts off after 30 seconds of non-use to save battery life • Easy-grip handle features innovative material to ensure gauge is held properly for the most accurate reading



476-05900

476-05988

ASCOT NO.	MFG. NO.	DESCRIPTION
476-05900	5900	Digital Tire Pressure Gauge
476-05988	5988	Digital Tire Pressure Gauge w/ Backlight

### DILL ADJUSTABLE TRUCK TIRE GAUGES

1-2% ACCURACY

ASCOT NO.	MFG. NO.	DESCRIPTION
476-07125	7125H	Straight and 30 Degree Reverse, Chrome, White Nylon Bar
476-07233	7233	360 Deg. Swivel for Standard and Large Bore
476-07262	7262	Straight and 30 Degree Reverse, Black, Black Metal Bar
476-07275	7275RB	Adjustable Truck Service Gauge with 25 Degree Offset Angle Chuck (Internally Adjustable)
476-07285	7285R	Dual Foot Service Gauge With Reverse Angle Chuck (Internally Adjustable)
476-17275	7275RBE	Adjustable Truck Service Gauge with 25 Degree Offset Angle Chuck (Externally Adjustable)
476-17285	7285E	External Adjustable Truck Service Gauge
476-27275	7275	Dual Angle, Chrome, Black Metal Bar
476-37285	7285	Straight and 30 Degree Reverse, Chrome, Black Metal Bar



476-07275

476-17285

### ADJUSTABLE FIELD SERVICE GAUGES

• **Field adjustable truck service gauges** • External Adjustment Screw makes calibration quick & easy • Adjustable Calibration • Plated finish provides corrosion protection and great looks • 4-sided metal indicator bar is durable and easy to read • Hang-up ring provides a convenient method of storage • Flat-head screwdriver required for calibration



476-01046

476-11048

1-2% ACCURACY

ASCOT NO.	MFG. NO.	DESCRIPTION
476-00135	135S-RCL	Adjustable Dual Foot Service Gauge
476-00165	165S-RCL	Adjustable Dual Foot Service Gauge
476-00185	185S-RCL	Adjustable Dual Foot Service Gauge -180 Degree Reverse Chuck
476-00250	250S-RCL	Adjustable Large Bore Pencil Gauge
476-00255	255S-RCL	Adjustable Large Bore Swivel Gauge
476-01046	1046-ADJ	Screwdriver Adjustable Calibration Gauge
476-11048	1048-ADJ	Internal Adjustable Metal Bar Gauge

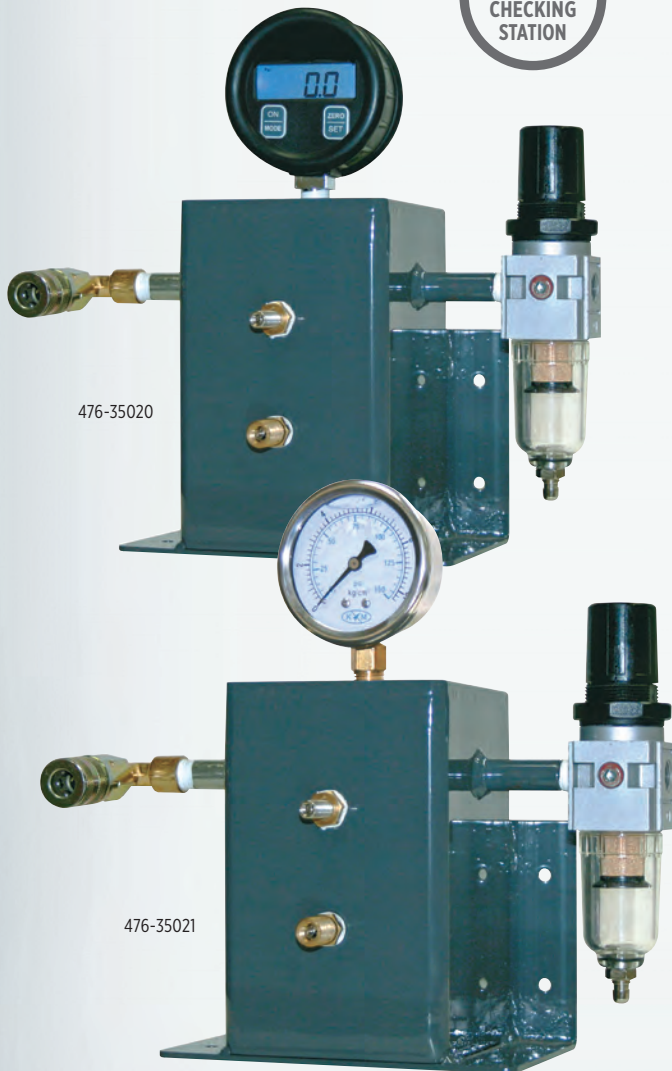




MASTER AIR GAUGE CHECKING STATIONS

- **INFLATION RANGE:** 0-200 PSI • **ACCURATE TO:** ±1 PSI • Designed to allow users to quickly and accurately check their air gauges and inflator gauges
- **THREE CHECKING POINTS:** standard valve port, large bore valve port & female coupler port • Most accurate checking station on the market • Equipped with a regulator and filter for proper air and water filtration • CARB Certified
- Back-lit readout for ease of use • Can be mounted to a bench or a wall

MOST ACCURATE CHECKING STATION



476-35020

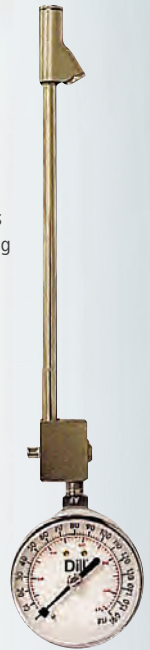
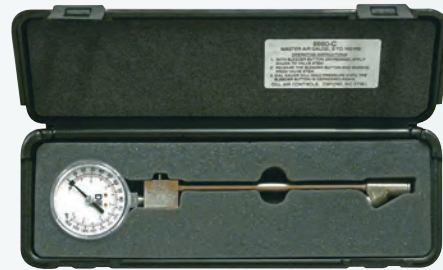
476-35021

ASCOT NO.	MFG. NO.	DESCRIPTION
476-35020	TS3502A	Digital Gauge Checking Station
476-35021	TS3502AL	Air/Liquid Gauge Checking Station



MASTER TEST GAUGE

- **For checking accuracy of service and pencil gauges** • Has dual foot chuck and a retaining valve to hold pressure reading after gauge is removed from valve to within +/- 2% of total dial reading • Includes protective case • **MADE IN THE USA**



476-08860

ASCOT NO.	MFG. NO.	DESCRIPTION	RANGE
476-08860	8860C	Master Test Gauge	0 - 160 PSI

DILL AIR GAUGE CHECKING STATIONS

- **A quick accurate way for tire dealers to check the accuracy of air gauges - a must for facilities that need to comply with California standards** • 0-160 psi liquid filled gauge • Access valve mounted on a pressure reservoir • 1/4 inch NPT filter/regulator to remove contaminants from compressed air • A certificate of accuracy for ISO records • Designed to easily bolt to a wall or table • **MADE, TESTED & CERTIFIED IN THE USA**



476-08500

476-08501

EASILY BOLT TO WALL OR TABLE

ASCOT NO.	MFG. NO.	DESCRIPTION
476-03502	3502	Replacement Digital Air Gauge
476-08500	8500	Dill Air Gauge Checking Station (With large bore port)
476-08501	8500D	Dill Digital Air Gauge Checking Station (With large bore port)
476-08900	8900	Replacement Dial Air Gauge (Fully Calibrated)

VALVE HARDWARE



⚠️ **WARNING:** For more information go to [www.P65Warnings.ca.gov](http://www.P65Warnings.ca.gov).



# Dill USA Gauges

Proudly made in the USA



476-07277



**A** DILL USA PENCIL GAUGES



**B** DILL USA DUAL FOOT TRUCK GAUGES



**C** DILL USA TRUCK SERVICE GAUGES

## DILL USA PENCIL GAUGES†

ASCOT NO.	MFG. NO.	RANGE	DESCRIPTION	FINISH	QTY./PACK
476-05602	5600-CH-USA*	10-75 PSI	Chrome Finish Gauge	Chrome	10
476-05603	5600-ST-USA*	10-75 PSI	Standard Silver Gauge	Aluminum	200
476-05604	5600-CF*	10-75 PSI	Classic Camouflage Gauge	Camouflage	10
476-07212	7212-USA*	20-120 PSI	High Pressure Gauge	Chrome	10
476-07213	7213-USA*	10-50 PSI	Passenger Car Gauge	Chrome	10
476-07215	7215-USA	20-120 PSI	High Pressure Gauge	Gold	10
476-07226	7226H*	20-120 PSI	Small Diameter Straight Chuck - Fits Standard and Large Bore	Chrome	10
476-07229	7229-USA*	1-20 PSI	Low Pressure 1/2 PSI Units	Chrome	10
476-07230	7230-USA*	5-45 PSI	Air Liquid Gauge	Chrome	10
476-07277	7277-USA*	10-75 PSI	Assorted 10 Colored Pencil Display Pack	Chrome	10
476-07290	7290-USA*	20-90 PSI	Standard Blue Pencil Gauge	Blue	200
476-01941	941-USA*	20-120 PSI	High Pressure Gauge	Silver	10

† Red, blue, green, gold, purple and grey colors available.

## DILL USA DUAL FOOT TRUCK GAUGES

ASCOT NO.	MFG. NO.	RANGE	DESCRIPTION	FINISH	QTY./PACK
476-07248	7248-USA*	20-120 PSI	Dual Angle Foot Chuck	Chrome	10
476-07263	7263-USA*	20-120 PSI	Straight-On 30° Reverse Chuck	Black Powder	10
476-07278	7278-USA*	20-120 PSI	Straight-On 30° Reverse Chuck	Chrome	10

## DILL USA TRUCK SERVICE GAUGES

ASCOT NO.	MFG. NO.	RANGE	DESCRIPTION	FINISH	QTY./PACK
476-00001	SG1	10-150 PSI	Dual Foot Head; Chrome Body with Black Markings on a White Bar	Chrome	1
476-00002	SG2	10-150 PSI	Dual Foot Head; Chrome Body with White Markings on a Black Bar - Adjustable	Chrome	1
476-00003	SG3	10-150 PSI	Dual Foot Head; Black Powder Coated Body with White Marking on a Black Bar - Adjustable	Black Powder	1

\* Denotes gauges meet the proposed California Regulation for Under Inflated Vehicle Tires No. 95550.

VALVE HARDWARE



# Dill USA Chucks

Proudly made in the USA



**A** DILL USA AIR CHUCKS



478-62930



478-62931



478-62932

**B** DILL USA CLIP-ON AIR CHUCKS

VALVE HARDWARE

## DILL USA AIR CHUCKS

ASCOT NO.	MFG. NO.	LENGTH	DESCRIPTION	FINISH	QTY./PACK
478-06172	6172-USA	6"	Angle Chuck for Inner Dual Wheels with Tilted Valves	Chrome	10
478-06173	6173-USA	6"	Lock Feature Straight-On 180° Degree Reverse Angle Chuck	Chrome	10
478-06174	6174-USA	14"	Extra Long Length Lock Feature Straight and 30° Reverse Angle Chuck	Chrome	10
478-16174	6174-BLK-USA	14"	Extra Long Length Lock Feature Straight and 30° Reverse Angle Chuck	Black Powder	10
478-06175	6175-USA	6"	Lock Feature Straight-On 30° Reverse Angle Chuck	Black Powder	10
478-06176	6176-USA	6"	For Standard Air Line Service	Chrome	10
478-06999	6999-USA	6"	Straight with 30° Reverse Angle Chuck	Chrome	10
478-16999	6999L-USA	6"	Same as 6999-USA Except for Lock-On	Chrome	10

# Air Chucks

## DUAL FOOT AIR CHUCKS



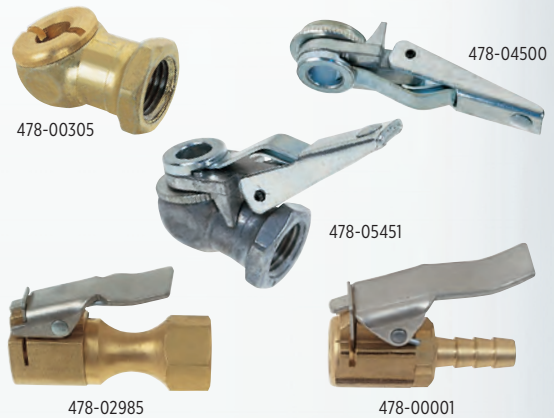
ASCOT NO.	MFG. NO.	DESCRIPTION
478-00335	CH-335	Angled Chuck. Plated Finish (Normally Closed)
478-01330	6568-FT	Dual Foot Chuck. 1/4" FPT, 6" Long, Lock-On Threads (Normally Open)
478-01335	CH-335-OP	Angled Chuck. Plated Finish (Normally Open)
478-01350	CH-350-LO	Straight-On/Angled Chuck. Protective Black Epoxy Finish (Normally Closed)
478-01351	6568T-FT	Straight-On/Angled Chuck. Black Epoxy Finish (Normally Open)
478-01352	6568TL	Dual Foot Black Chuck 14" (Normally Closed)
478-03300	CH-330-LO	Straight-On/Angled Chuck. With Lock-On Threads (Normally Closed)
478-03301	CH-330	Straight-On/Angled Chuck (Normally Closed)
478-03330	CH-333-LO	Straight-On/Angled Chuck. 14" Long (Normally Closed)
478-03370	CH-370-LO	Straight-On/180° Chuck. 1/4" NPT (Normally Closed)
478-06585	6585LB	Large and Standard Bore Chuck. 1/4" NPT (Normally Closed)

## ANGLE HEAD AIR CHUCKS

ASCOT NO.	MFG. NO.	DESCRIPTION
478-03238	3238P-C	Angle Head Air Chuck - Chrome Finish



## BALL FOOT CHUCKS



ASCOT NO.	MFG. NO.	DESCRIPTION
478-00305	CH-305	Ball Foot Chuck. 1/4" Female Thread (Normally Closed)
478-00315	CH-315	Ball Foot Chuck With Lock-on Clip. 1/4" Female Thread (Normally Closed)
478-00325	CH-325	Ball Foot Chuck With Lock-on Clip. 1/4" Female Thread (Normally Open)
478-05451	—	Ball Foot Chuck With Lock-on Clip. 1/4" Female Thread (Normally Closed - Alligator)
478-00707	—	Replacement Washer. For 478-05451 Ball Foot Chuck
478-04500	—	Air Chuck Clip. For All Ball Foot Chucks
478-04501	—	Economy Clip for Clip-On Ball Foot Air Chuck

## EUROPEAN-STYLE CLIP-ON CHUCKS

ASCOT NO.	MFG. NO.	DESCRIPTION
478-00001	N-1200	European-Style Clip-On Chuck. Serrated Shank for 1/4" I.D. Hose. Silver (Normally Open)
478-02985	CH-360	European-Style Clip-On Chuck. 1/4" Female Fitting. Silver Clip (Normally Closed)
478-02995	CH-360-OP	European-Style Clip-On Chuck. 1/4" Female Fitting. Black Clip (Normally Open)
478-06293	6293-S	European-Style Clip-On Chuck. 1/4" Barbed Fitting. Straight Clip Chuck. Small Head Design. Silver Clip (Normally Open)



## LOCK-ON AIR CHUCKS

ASCOT NO.	MFG. NO.	DESCRIPTION
478-00340	CH-340	Lock-On Air Chuck. 1/4" NPT Female Thread. Securely Locks Onto Valve When Sleeve Is Pushed Forward
478-01340	CH-340-OP	Lock-On Air Chuck. Available For Use With Tire Changers
478-05265	H-5265	Lock-On Air Chuck. Specially Designed To Lock Onto The Cap Of A Standard Bore Valve Stem When The Sliding Sleeve Is Pushed To Forward Position



478-00340



478-05265



REVERSE ANGLE LOCK-ON AIR CHUCK

• Reverse angle lock-on chuck allows easy access to outer dual valve



478-00345

ASCOT NO.	MFG. NO.	DESCRIPTION
478-00345	CH-345	Reverse Angle Lock-On Air Chuck (Normally Closed)
478-01345	CH-345-OP	Reverse Angle Lock-On Air Chuck (Normally Open)



TRUCK LOCK-ON EXTENSION CHUCK

- Extended reach for dual wheels
- Easy on/off application
- Steel pins for increased service life
- Automatic locking design
- Improves seal on flow through caps
- 22" overall length



478-32072



LONG REACH STRAIGHT LOCK-ON CHUCK

ASCOT NO.	MFG. NO.	DESCRIPTION
478-00346	CH-346	Long Reach Straight Lock-On Chuck (Normally Closed)
478-01346	CH-346-OP	Long Reach Straight Lock-On Chuck (Normally Open)

478-00346



EUROPEAN-STYLE CLIP-ON CHUCK



478-02975

ASCOT NO.	MFG. NO.	DESCRIPTION
478-02975	CH-360S	European-Style Clip-On Chuck. 1/4" Female Fitting - With Spring Loaded Deflector Pin

ASCOT NO.	MFG. NO.	DESCRIPTION
478-32072	32071-L2	Truck Lock-On Extension Chuck

VALVE HARDWARE

## Air Chucks (cont.)

## LARGE BORE GAUGES



ASCOT NO.	MFG. NO.	DESCRIPTION
454-01410	N-1410	Off-Highway Tire Tread Depth Gauge. Calibrated With 32nds And MM. Magnified Sight Glass For Easy Readability
454-05131	5131	Large Bore Tread Depth Gauge
454-05300	5300	Tire Tread Depth Gauge w/ Magnifying Lens - Calibrated with 32nds & MM
476-02555	GA255S-RCL	Recalibrateable Large Bore Swivel Gauge. Nickel Plated Brass. Metal Slide Bar. Calibrated 10-150 PSI in 2 lb. Units. Swivels 360° for Those Hard-to-Reach Valves
476-07233	7233	Dill Swivel Gauge
476-10240	GA-240	Straight-On Gauge. 20 - 120 PSI
476-10250	GA-250S	Swivel Gauge. Nickel Plated Brass. Plastic Bar. Calibrated 10 - 150 PSI In 2 lb. Units. Swivels 360° For Those Hard-To-Reach Valves
476-10255	GA-255S	Swivel Gauge. Nickel Plated Brass. Metal Slide Bar. Calibrated 10 - 150 PSI In 2 lb. Units. Swivels 360° For Those Hard-To-Reach Valves

## LARGE BORE AIR CHUCKS



ASCOT NO.	MFG. NO.	DESCRIPTION
478-00322	322	Large Bore Dual Foot Air Chuck. 45° Chuck For Easy Access To Valve. 1/4" NPT Female Thread
478-00326	326	Screw-On Air Chuck. .458"-26 Internal Thread. 1/2" NPT External Thread. Full Flow For Seating Of Tire Beads
478-00328	AC-B10	Short Lock-On Air Chuck. Locks On Valve When Cocked On Threads. Greater Air Flow And Seat Cannot Be Blown Out If Seal Fails. 1/4" NPT Thread
478-00377	AC-B11	Long Lock-On Air Chuck
478-04660	AC-B12	Clip-On Air Chuck. Locks Onto Valve When Sleeve Is Pushed Forward, Releases When Sleeve Is Pulled Back. 1/4" NPT Female Thread
478-06190	6190	Quick Connection Inflation Gauge. For Use With 6185 Check Valve. Sliding Sleeve Locks Chuck Onto Check Valve. Permits Unrestricted Air Flow
478-10013	10013	Large Bore Screw-On Chuck. Fits 3/8" ID Air Hose

# Inflator Gauges

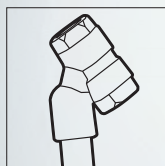
## RPG DIGITAL INFLATOR

- Auto on/off operation • **MAX INFLATION:** 174 PSI • Accuracy exceeds EC Standards
- Multi-scale gauge
- Serial/batch numbered
- Backlit digital display
- Wire sheathed hose eliminates kinking
- Impact absorbing bumpers • Rubber grip on chuck
- Tough die cast aluminium body
- 20" hose with hold-on chuck • Quick and easy



TOUGH AND DURABLE

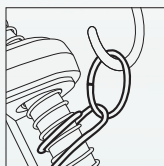
### MULTI-GAUGE SCALE:



Dual Angle Chuck



Multi-Scale Gauge



Hang Point

ASCOT NO.	MFG. NO.	DESCRIPTION
477-10312	10.3012RPG	Digital Inflator w/ 20" Hose and Hold-On Air Chuck



## AUTOMATIC INFLATOR

- All the features of a wall mounted inflator in a portable hand held unit • **BUILT-IN OVERPRESSURE SETTING FUNCTION** • Auto on/off operation • **MAX INFLATION:** 174 PSI • Accuracy exceeds EC Standards • Multi-scale gauge
- Serial/batch numbered • Backlit digital display • Wire sheathed hose eliminates kinking • Tough poly carbonate/ABS body • Two programmable pre-set buttons • Fast and safe 5' hose with lock-on chuck • Built-in rechargeable lithium-ion battery
- Up to 15 hours of continuous use
- Includes AC adapter for charging & certificate of calibration



477-11612

ASCOT NO.	MFG. NO.	DESCRIPTION
477-11612	11.0612NA	Automatic Inflator - 5' Hose w/ Clip-On Air Chuck



## RPG DIGITAL TIRE INFLATORS

- **INFLATION RANGE:** 0-174 PSI • **ACCURATE TO:** ± 1.2 psi
- Auto ON, upon air pressure sensing • Large tilted LCD display with backlight and 90 second auto OFF • Multi-scale gauge • Die-cast aluminum unit with rubber protective sleeve • Lightweight handle and trigger • Wire sheathed hose on flex area of hose to eliminate kinking



477-11235

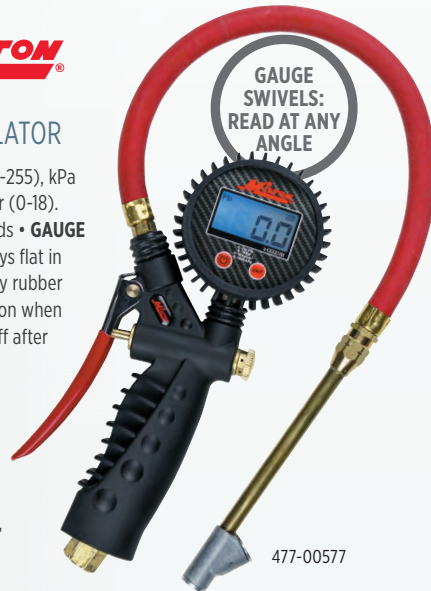
ASCOT NO.	MFG. NO.	DESCRIPTION
477-11235	11.0723ASC5	RPG Digital Inflator: 20" Hose w/ Clip-On Chuck
477-11237	11.0723ASC7	RPG Digital Inflator: 6' Hose w/ Clip-On Chuck
477-11239	—	Replacement 6' Hose w/ Clip-On Chuck for Digital Inflators
477-11240	—	Replacement 20" Hose w/ Clip-On Chuck for Digital Inflators

## Inflator Gauges (cont.)



## PRO DIGITAL TIRE INFLATOR

• **ACCURATE:** Measures in PSI (0-255), kPa (0-1800), kg/cm<sup>2</sup> (0-18), and Bar (0-18). Meets ANSI/ASME B40.1 standards • **GAUGE SWIVELS:** Reads at any angle, lays flat in your toolbox. Gauge protected by rubber boot • **BACKLIT DISPLAY:** Auto-on when tire pressure is detected; Auto-off after inactivity to save battery • **EASY HANDLING:** Durable/ergonomic grip. Quick fine tuning in case you exceed the target pressure • **6" STRAIGHT FOOT CHUCK:** Full swivel and hose w/threaded lock-on design, enabling hands-free inflation



477-00577

ASCOT NO.	MFG. NO.	DESCRIPTION
477-00577	S-577D	Pro Digital Tire Inflator - 15" Hose w/ Lock-On Threads

## PRECISION DIGITAL TIRE INFLATOR

• **Most accurate pressure gauge on the market (0-160 PSI), Extreme ± 0.05% Accuracy** • **EASY-TO-READ DIGITAL DISPLAY:** Large articulating easy to read digital display that is easy to read in any light condition, at any angle, display automatically adjusts for left or right handed use, or vertical portrait mode • High contrast electrophonic screen • **AUTO ON/OFF FEATURE:** Powers on when air pressure is detected, power off after 120 seconds of inactivity • Deflation button • Job site work light, valve cap holder, integrated hang hook for storage



477-00587

ASCOT NO.	MFG. NO.	DESCRIPTION
477-00587	S-580e-KIT	Precision Digital Tire Inflator - Dual Foot Chuck



**WARNING:** Never inflate a tire on a multi-piece rim (a rim made up of 2 or more separate pieces) unless the tire and rim are mounted in OSHA regulation 29-CFR Part 1910.177 or D.O.T. approved tire inflation cage. OSHA Regulations require that an inflator gauge must be equipped with a lock-on chuck and have a hose extension sufficiently long for the operator to stand clear of the possible trajectory of a multi-piece rim.



## DIGITAL HAND-HELD TIRE INFLATOR\*

• **INFLATION RANGE:** 0 - 174 PSI • **ACCURACY:** +/- .2 PSI • 6' Hose • Lightweight shock-resistant design • High specification ceramic sensor • Long life, easily replaceable battery • Available in custom hose lengths and chuck styles • Valve has provisions for checking air pressure during inflation • Threaded for 1/4" male NPT hose fittings



477-10001

ASCOT NO.	MFG. NO.	DESCRIPTION
477-10001	Accura 1	Digital Hand-Held Tire Inflator

\* This gauge provides more accurate air pressure readings which is essential with TPMS.

## MK4 HEAVY DUTY HAND-HELD INFLATOR

• **NEW VIEWING WINDOW:** Larger viewing window gives 20% greater field of viewing • **LIGHTER WEIGHT:** Gauge body weighs 2.035lbs, less work strain and easier for repetitive use • **BIOMORPHIC SHAPE:** Ergonomic, easier to use and less prone to damage when dropped • **NEW VALVE MECHANISM:** Simplified 2-stage mechanism design prevents user having to "push" against full line pressure on deflate preventing fatigue • **NEW PISTON & SEAL DESIGN:** New design, less drag, reduced friction & less movement inertia means no internal corrosion, no sticking and no skewing of accuracy • **NEW CLEAR LITHOGRAPHIC DESIGN:** Fast and accurate reading of results • **MAXIMUM INFLATION PRESSURE:** 160 PSI



477-10004

NEW  
PISTON  
& SEAL  
DESIGN

ASCOT NO.	MFG. NO.	DESCRIPTION
477-10004	MK4	MK4 Heavy Duty Hand-Held Inflator





DILL DIGITAL TIRE INFLATOR GAUGE

- **Digital backlight readout** • 0-170 PSI range • 2 or 6ft. hose
- Clip-on or dual-foot chuck • **ASSEMBLED AND TESTED IN THE USA**



477-76063

CLIP-ON OR DUAL FOOT CHUCK

DIGITAL BACKLIGHT READOUT

ASCOT NO.	MFG. NO.	DESCRIPTION
477-76023	7260-2-6293E	Digital Inflator - 2 Ft. Hose - Clip-On Chuck
477-76029	7260-2-6999FT	Digital Inflator - 2 Ft. Hose - Straight Chuck
477-76063	7260-6-6293E	Digital Inflator - 6 Ft. Hose - Clip-On Chuck
477-76069	7260-6-6999FT	Digital Inflator - 6 Ft. Hose - Straight Chuck



HEAVY DUTY HOSE INFLATOR

- **Has two separate clip-on chucks with five-foot hoses** • **One chuck, CH-360, fits standard bore valves and the other, H-4660A, large bore valves** • Has springloaded, hand-operated valve and has provisions for checking air pressure during inflation
- Threaded for 1/4" male NPT hose fittings



477-00404

TWO SEPARATE CLIP-ON CHUCKS

ASCOT NO.	MFG. NO.	DESCRIPTION
477-00404	I-404	Heavy Duty Hose Inflator

DILL DIGITAL INFLATORS W/ STAINLESS STEEL HOSE

- **Two-foot, kink-resistant, stainless steel hose** • Large backlit display • Auto on/off feature • Dual foot or Clip-on Made in the USA air chuck
- **Assembled and tested in the USA**



477-76263

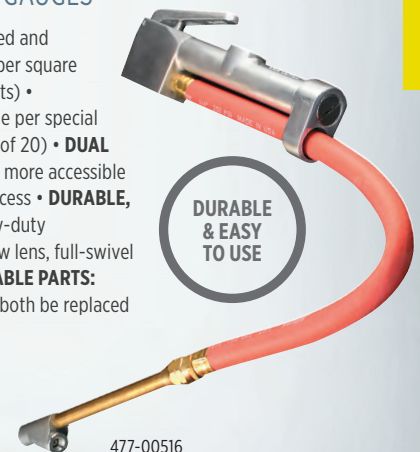
2' KINK-RESISTANT HOSE

ASCOT NO.	MFG. NO.	DESCRIPTION
477-72623	7260-S2-6293E	Digital Inflator - 2 Ft. Stainless Steel Hose - USA-Made Clip-On Chuck
477-72629	7260-S2-6999FT	Digital Inflator - 2 Ft. Stainless Steel Hose - USA-Made Dual Foot Chuck



CHUCK TIRE INFLATOR GAUGES

- **ACCURATE:** Performance-tested and calibrated. Measures in pounds per square inch (PSI, 10-160, 2-lb. increments) • Kilopascal readings also available per special order (kPa, 80-840, increments of 20)
- **DUAL HEAD CHUCK:** Makes tire valves more accessible with the two heads for easier access
- **DURABLE, EASY-TO-USE INFLATOR:** Heavy-duty construction, magnifying window lens, full-swivel chuck, 15-inch hose
- **REPLACEABLE PARTS:** Gauge and valve cartridges can both be replaced



477-00516

DURABLE & EASY TO USE

ASCOT NO.	MFG. NO.	DESCRIPTION
477-00506	S-506	Dual Head Chuck Tire Inflator Gauge
477-00516	S-516	Straight Foot Chuck Tire Inflator Gauge

VALVE HARDWARE

## Inflator Gauges (cont.)



### AIR LINE INFLATORS

- Ideal for gauging and inflating dual tires on trucks and buses as well as passenger cars and light trucks
- Solid brass indicator bar
- Allows operator to stand away while inflating and deflating tires
- Bleeder valve allows user to adjust tire pressure without touching either the tire or valve stem

### LARGE BORE AIR LINE INFLATOR GAUGES

- Large Bore inflation unit with in-line gauge • Equipped with AC-B12 large bore chuck • Gauge is calibrated 10-140 PSI in 2 lb. increments • Available in hose lengths of 6', 9' & 12' • 477-01006 Similar to Haltec I-409



STANDARD #	HAND HELD #	DIGITAL BODY #	DESCRIPTION
<b>AIR LINE INFLATOR GAUGE</b>			
477-00001	477-20001	477-30001	12" Hose w/ Dual Foot Chuck
477-00011	N/A	477-30011	12" Hose w/ Tapered Chuck
477-00111	477-20111	477-30111	12" Hose w/ Lock-On Chuck
477-01111	477-21111	477-31111	12" Hose w/ No Chuck
477-11111	N/A	N/A	12" Hose w/ Lock-On Chuck & Bleeder Valve
<b>SAFETY INFLATOR GAUGE</b>			
477-00002	477-20002	477-30002	3' Hose w/ Ball Foot (Clip-On) Chuck
477-00003	477-20003	477-30003	3' Hose w/ Straight Lock-On Chuck
477-00004	477-20004	477-30004	6' Hose w/ Ball Foot (Clip-On) Chuck
477-00005	477-20005	477-30005	6' Hose w/ Straight Lock-On Chuck
477-00008	477-20008	477-30008	9' Hose w/ Ball Foot (Clip-On) Chuck
477-00009	477-20009	477-30009	9' Hose w/ Straight Lock-On Chuck
477-00010	477-20010	477-30010	12' Hose w/ Ball Foot (Clip-On) Chuck
477-00012	477-20012	477-30012	12' Hose w/ Straight Lock-On Chuck
477-00014	477-20014	477-30014	6' Hose w/ No Chuck
477-00015	477-20015	477-30015	15' Hose w/ Straight Lock-On Chuck
477-00020	477-20020	477-30020	20' Hose w/ Straight Lock-On Chuck
477-00033	477-20033	477-30033	3' Hose w/ Euro-Style Chuck
477-00066	477-20066	477-30066	6' Hose w/ Euro-Style Chuck
477-00099	477-20099	477-30099	9' Hose w/ Euro-Style Chuck
477-00112	477-20112	477-30112	3' Hose w/ No Chuck
477-00113	477-20113	477-30113	3' Hose w/ Sleeve Chuck
477-00115	477-20115	477-30115	6' Hose w/ Black Epoxy Lock-On Chuck
477-00118	477-20118	477-30118	9' Hose w/ No Chuck
477-00144	477-20144	477-30144	12' Hose w/ Euro-Style Chuck
477-01112	477-21112	477-31112	12' Hose w/ No Chuck



Safety Inflator Gauge with Ball Foot (Clip-On) Chuck



477-01006



Safety Inflator Gauge with Straight Lock-On Chuck



477-01009



Air Line Inflator Gauge



477-01012

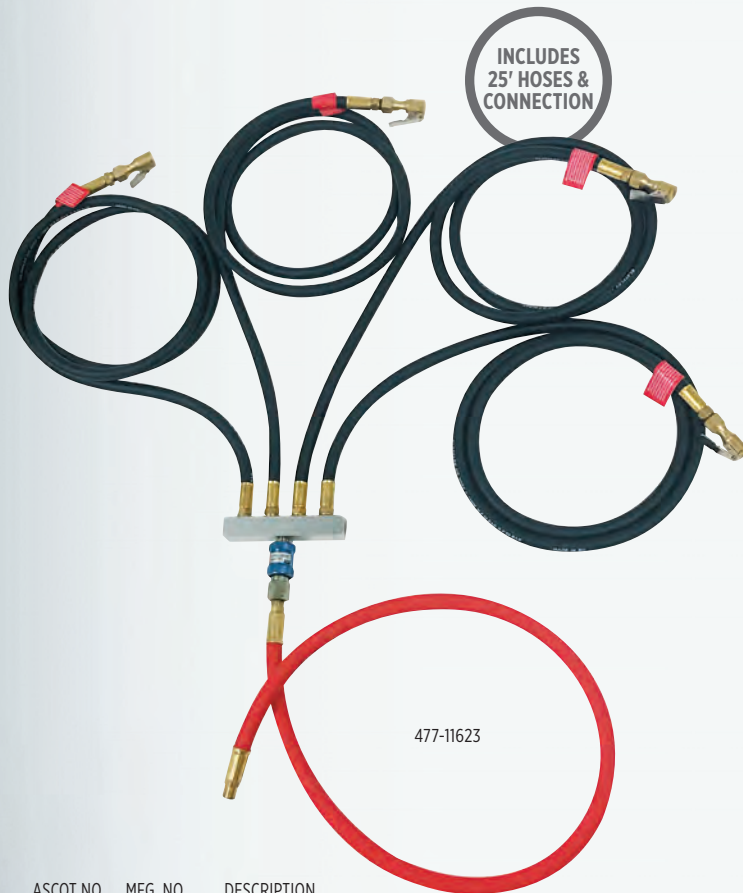
ASCOT NO.	DESCRIPTION
477-01006	6' Hose with AC-B12 Large Bore Chuck
477-01009	9' Hose with AC-B12 Large Bore Chuck
477-01012	12' Hose with AC-B12 Large Bore Chuck
477-01025	25' Hose with AC-B12 Large Bore Chuck

VALVE HARDWARE



### 4-WAY INFLATOR KIT

- Quick coupler connects directly to the inflator
- Slide valve allows air supply to be turned on/off
- Includes all USA hoses and connection



ASCOT NO.	MFG. NO.	DESCRIPTION
477-11623	11.0623NA	4-Way Inflation Kit



### LARGE BORE INFLATION GAUGE

- Large bore inflation unit with in-line gauge
- Equipped with H-4660A chuck and 6' hose
- Gauge calibrated 10-120 PSI (70-800 kPa) in 2 PSI increments



ASCOT NO.	MFG. NO.	DESCRIPTION
477-00409	I-409	Large Bore Inflation Gauge



### 4-WAY INFLATOR ACCESSORY BLOCK

- Lightweight aluminum manifold splits air lines into 4 separate lines
- Slide valve turns air on/off to start inflation
- (4) 1/4" universal quick couplers allow for any type fitting
- 3' whip hose



ASCOT NO.	DESCRIPTION
477-11624	4-Way Inflation Accessory Block



### 6-IN-1 AIR LINE MANIFOLD KIT

- Lightweight aluminum manifold
- 1/4" air inlet
- (6) 1/4" outlets
- (3) 1/4" aluminum plugs



ASCOT NO.	DESCRIPTION
477-47732	6-in-1 Air Line Manifold Kit

VALVE HARDWARE



⚠ **WARNING:** For more information go to [www.P65Warnings.ca.gov](http://www.P65Warnings.ca.gov).

## Inflator Gauges (cont.)



## INFLATOR SYSTEM

- **1/2" ball valve with dial gauge for checking pressure** • Equipped with safety coupler for releasing pressure in case of emergency • 1/2" NPT connection • 3/8" ID for maximum air flow

ASCOT NO.	MFG. NO.	DESCRIPTION
477-35020	I-350-20	Inflator System

SAFETY  
COUPLER  
FOR  
EMERGENCIES

INCLUDES  
HOSES &  
CONNECTION



477-35020

## INFLATOR SYSTEM

- **1/2" ball valve with dial gauge for checking pressure** • Equipped with safety coupler for releasing pressure in case of emergency • 1/2" NPT connection • 3/8" ID for maximum air flow

ASCOT NO.	MFG. NO.	DESCRIPTION
477-34020	I-340-20	Inflator System



477-34020

## INFLATOR SYSTEM

- **Safely removes operator away from blast zone by using the 15' hose** • Shut-off valve (ball valve) enables operator to stop inflation for proper tire inspection • Includes IN-95 and three additional unions to adapt different sizes, such as SLB, MB & ZB

ASCOT NO.	MFG. NO.	DESCRIPTION
477-49515	I-495-15	Inflator w/ 15' Hose



477-49515